



# Dormakaba Access Control Integration App-note

# Contents

|   |    |
|---|----|
| 1. Introduction.....                                  | 4  |
| 1.1 Requirements .....                                | 4  |
| 1.1.1 General Requirements.....                       | 4  |
| 1.1.2 License Requirements .....                      | 4  |
| 1.1.3 Third-Party Device Information.....             | 5  |
| 1.2 Integration Components .....                      | 5  |
| 1.3 Features and Abilities .....                      | 5  |
| 1.3.1 Device Objects .....                            | 5  |
| 1.3.2 Device Events.....                              | 7  |
| 1.3.3 Metadatabase.....                               | 8  |
| 1.3.4 Maps .....                                      | 9  |
| 2. Device Addition .....                              | 10 |
| 2.1 The Integration Devices Panel .....               | 10 |
| 2.2 Add a New Device.....                             | 11 |
| 2.3 Select Device.....                                | 12 |
| 3. Configuration.....                                 | 13 |
| 3.1 Object Configuration Tab .....                    | 13 |
| 3.1.1 Object Configuration Buttons.....               | 13 |
| 3.1.2 Object Configuration Right-Click Options.....   | 14 |
| 3.1.3 Edit Object .....                               | 14 |
| 3.1.4 Configure Overlays .....                        | 15 |
| 3.2 Objects Properties Tab .....                      | 17 |
| 3.2.1 Controlling Commands on Dormakaba .....         | 18 |
| 3.3 Device Events Tab.....                            | 18 |
| 3.4 Object Groups Tab.....                            | 19 |
| 3.4.1 Create a Group .....                            | 19 |
| 3.4.2 Add or Remove Objects.....                      | 20 |
| 3.5 General Tab .....                                 | 20 |
| 3.5.1 Configure a New Database .....                  | 21 |
| 3.5.2 Select the Dormakaba Integration Database ..... | 23 |
| 4. CathesisVision System Events .....                 | 25 |
| 4.1 Event Window .....                                | 25 |
| 4.2 Creating an Event.....                            | 25 |

---

|   |    |
|---|----|
| 4.3 General Tab .....   | 26 |
| 4.4 Triggers Tab .....  | 26 |
| 4.4.1 Set the Device as the Trigger .....                             | 27 |
| 4.4.2 Trigger Types (Trigger Using) .....                             | 27 |
| 4.4.3 While/When and Any/All.....                                     | 28 |
| 4.4.4 Define the Trigger (“Any Device Event” Option) .....            | 28 |
| 4.4.5 Define the Trigger (“Properties Meeting Criteria” Option) ..... | 30 |
| 4.5 Actions Tab .....   | 31 |
| 4.5.1 Adding an Action .....  | 31 |
| 4.6 Resources Tab.....  | 35 |
| 5. Camera Tab Overlay Setup .....                                     | 36 |
| 5.1 Navigate to the Cameras Tab .....                                 | 36 |
| 5.2 Video Feed Options Panel .....                                    | 36 |
| 5.2.1 Select the Overlay.....   | 36 |
| 6. Database.....  | 37 |
| 6.1 Navigate to the Database .....                                    | 37 |
| 6.2 Database Interface .....  | 38 |
| 6.2.1 Generate and Export Metadatabase Reports.....                   | 39 |
| 6.2.2 Scheduled Metadatabase Reports .....                            | 41 |
| 6.2.3 Metadata .....  | 42 |
| 6.2.4 Viewing an Entry’s Associated Recording.....                    | 43 |
| 7. Maps .....   | 44 |
| 7.1 Add Dormakaba as a Resource .....                                 | 44 |
| 7.2 Add the Device in Map Editor.....                                 | 45 |
| 7.2.1 Connect to Site .....   | 45 |
| 7.2.2 Adding Device Objects.....                                      | 45 |
| 7.3 Adding a Polygon/Shape.....                                       | 46 |
| 7.3 Adding Device Actions .....                                       | 46 |
| 7.3.1 Action Options .....  | 47 |
| 7.4 Save Map .....  | 49 |
| 7.5 CathexisVision Map Tab .....                                      | 50 |
| 8. Conclusion .....   | 51 |

# 1. Introduction

The document provides instructions for the integration the Dormakaba access control solution with CathesisVision.

Dormakaba is an integrated access solution for controlling and monitoring access on doors and locks and for managing entrance to and exit from the workplace. A defined group may be given access to certain buildings or areas. The systems allows for different products to be combined, or supplemented by mechanical, mechatronic locking systems, digital door components and personal interlock systems.

Up to two registration units can be connected directly to the Access Manager 9200, and further access readers via the RS-485 sub-bus.

**Note:**

1. For information regarding the regular operation of the Dormakaba access control system, please consult the manufacturer's documentation.
2. There is a General Integration section in the main *CathesisVision Setup Manual*. It contains information about creating an integration database, as well as a general introduction to the Integration Panel. **Read this section.**

## 1.1 Requirements

### 1.1.1 General Requirements

- CathesisVision 2023.1 or later
- Cathesis NVR 64-bit version
- Windows 10 Pro

### 1.1.2 License Requirements

| License     | Name                            | Description   |
|-------------|---------------------------------|---|
| CDKB – 3000 | Dormakaba Access Control Bundle | This license includes the <b>Dormakaba</b> device license, and also provides support for unlimited door licenses. |

**Note:** In this integration, individual devices will require a license for each device.

## 1.1.3 Third-Party Device Information

This integration was tested on:

|  |                               |
|--|-------------------------------|
| <b>Hardware name</b>                           | Dormakaba Access Manager 9200 |
| <b>Hardware model number</b>                   | 9200                          |
| <b>Firmware as tested</b>                      | BAME 04.07.268 RA - KCP       |
| <b>Third-party software name</b>               | Kaba Exos 9300                |
| <b>Third-party software version</b>            | 4.2.1304                      |
| <b>Third party software license/s required</b> | Yes                           |

## 1.2 Integration Components

All CathesisVision integrations have two component levels: **Device** and **Object**.

**Device** The device is CathesisVision software’s interface, which handles all the interaction between CathesisVision and the integrated hardware. When an integration is added to the CathesisVision system, a device is added. The messages received from the device are called Device Events.

**Objects** Objects are the individual pieces of hardware that comprise the integration. There may be multiple "object types" under the objects group. For example, the main controller and door nodes of an access control system are both objects. They are different types of objects.

**Note:** In this integration, the Device objects are named Device, System, and Communication channel. The interface device should not be confused with the object named “Device.” Objects named “Device” include panels and physical access points e.g. doors.

## 1.3 Features and Abilities

CathesisVision receives event messages from the Dormakaba device which can be used to trigger a CathesisVision system event.

### 1.3.1 Device Objects

| Object Type    | Abilities   |
|----------------|---|
| <b>General</b> | <ul style="list-style-type: none"> <li>• This integration has Device, System, and Communication channel objects.</li> <li>• Device objects can be commanded as an action of a CathesisVision system event.</li> <li>• Device objects support overlays.</li> </ul> |

|               |  |   |
|---------------|--|---|
|               | <ul style="list-style-type: none"> <li>• Events on the software can be used to trigger CathexisVision system and map events.</li> <li>• Objects may be linked to cameras to associate device events with video footage.</li> </ul> |   |
| <b>Device</b> | <b>Object Properties</b>   | <ul style="list-style-type: none"> <li>• Name</li> <li>• Data point type</li> <li>• Device ID</li> <li>• State</li> <li>• Mode</li> <li>• Address</li> <li>• Licensed</li> </ul>  |
|               | <b>Commands</b>  | <ul style="list-style-type: none"> <li>• Block</li> <li>• Block time limited</li> <li>• Operation</li> <li>• Release once</li> <li>• Release permanently</li> <li>• Release time limited</li> </ul> <p><b>Note:</b> These commands do not apply to all device objects.</p>                        |
|               | <b>State:</b><br><b>Communication hub,<br/>         Access point, Door<br/>         manager, Substation</b>  | <ul style="list-style-type: none"> <li>• Normal operation</li> <li>• Open</li> <li>• Closed</li> <li>• Connected</li> <li>• Not connected</li> <li>• Connection is being established</li> <li>• Unknown</li> <li>• Does not respond</li> <li>• Download is running</li> <li>• Starting</li> </ul> |
|               | <b>Mode:</b><br><b>Access point, or Panel</b>  | <ul style="list-style-type: none"> <li>• Access profile check</li> <li>• Blocked</li> <li>• Unknown</li> <li>• Release once</li> <li>• Release permanently</li> <li>• Central decision</li> <li>• Local decision</li> </ul>   |
| <b>System</b> | <b>Object Properties</b>   | <ul style="list-style-type: none"> <li>• ID</li> <li>• Name</li> <li>• Software version</li> <li>• Connection status</li> </ul>   |
|               | <b>Connection status</b>   | <ul style="list-style-type: none"> <li>• Connected</li> <li>• Connecting</li> <li>• Authenticating</li> </ul>   |

**Communication Channel**

**Object Properties**

- ID
- Name
- Channel status
- Details
- Creation type
- Creation time
- Idle time

### 1.3.2 Device Events

The CathesisVision Dormakaba integration generates Device events (logs), which are triggered on the device and reflected in CathesisVision.

| Event Element                              | Features/Abilities  |
|--|---|
| <p><b>General</b></p>                      | <ul style="list-style-type: none"> <li>• Events triggered on the device are sent to CathesisVision.</li> <li>• Event types are: Device.</li> </ul>  |
| <p><b>Device Event Types:<br/>Logs</b></p> | <ul style="list-style-type: none"> <li>• ID</li> <li>• Time</li> <li>• Log type (Alarm or Access)</li> <li>• Text</li> <li>• Person ID</li> <li>• Personal number</li> <li>• Name</li> <li>• Personnel type</li> <li>• Card number</li> <li>• Card role</li> <li>• Device address</li> <li>• Device name</li> <li>• Data point type</li> <li>• Substate F state</li> <li>• Substate on/off</li> </ul> |
| <p><b>CathesisVision Event Actions</b></p> | <p>An <b>access point</b> may be controlled via a CathesisVision event action to perform one of the following commands:</p> <ul style="list-style-type: none"> <li>• Block</li> <li>• Block time limited</li> <li>• Normal operation</li> <li>• Release once</li> <li>• Release permanently</li> <li>• Release time limited</li> </ul>  |

|  |   |
|--|---|
|  | Events generated by the device are reflected in CathesisVision, and can be used to create CathesisVision system events. |
|--|---|

### 1.3.3 Metadatabase

A unique metadatabase is created on the CathesisVision server for this integration. It is fully searchable, with configurable filters based on device event information (as above), and time stamping. The filtered event/s, and the associated video, will then be available for review in a new window from which an archive can be created and exported.

| Database Element    | Features/Abilities  |
|---------------------|---|
| <b>General</b>      | <ul style="list-style-type: none"> <li>• All device events are databased.</li> <li>• Database entries include the footage from cameras linked to device objects.</li> <li>• Multiple cameras may be linked to multiple objects.</li> <li>• Device event metadata is displayed where applicable.</li> <li>• Databased device events may be viewed in the embedded video player, which includes the usual CathesisVision video review tools.</li> </ul> |
| <b>View Options</b> | <ul style="list-style-type: none"> <li>• All</li> </ul>   |
| <b>Sort Options</b> | <ul style="list-style-type: none"> <li>• Time</li> </ul>  |
| <b>Easy Search</b>  | <ul style="list-style-type: none"> <li>• Time</li> <li>• Log type</li> <li>• Device address</li> <li>• Device name</li> <li>• Text</li> <li>• Person ID</li> <li>• Personal number</li> <li>• Name</li> <li>• Personnel type</li> <li>• Card number</li> <li>• Card role</li> <li>• Data point type</li> <li>• Sub-stat F Stat</li> <li>• Sub-stat on/off</li> <li>• Log ID internal</li> </ul>   |
| <b>Filter</b>       | <ul style="list-style-type: none"> <li>• Time</li> <li>• Log type</li> <li>• Device address</li> <li>• Device name</li> <li>• Text</li> <li>• Person ID</li> <li>• Personal number</li> </ul>   |



|               |   |
|---------------|---|
|               | <ul style="list-style-type: none"> <li>• Name</li> <li>• Personnel type</li> <li>• Card number</li> <li>• Card role</li> <li>• Data point type</li> <li>• Sub-stat F Stat</li> <li>• Sub-stat on/off</li> <li>• Log ID internal.</li> </ul> |
| <b>Export</b> | Database entries may be exported in CSV and PDF format.   |

### 1.3.4 Maps

The CathexisVision GUI provides for configurable site maps that feature multi-layered, hierarchical, interactive interfaces providing representation and control of a site and its resources.

| Map Element                | Features/Abilities  |
|----------------------------|---|
| <b>General</b>             | Device objects can be embedded in a site map, which offers multiple action options when messages are received from the device, the device triggers an event, and/or the user manually initiates a map action.   |
| <b>Map Action Triggers</b> | <ul style="list-style-type: none"> <li>• All device objects may be set to trigger a map action if the user left-clicks on map.</li> <li>• Some device objects may be set to trigger a map action if a state change message is received from the device.</li> <li>• All device objects may be set to perform a map action if <i>any</i> event occurs on the device.</li> <li>• Device objects, which can be configured to trigger CathexisVision events, may also be set to perform a map action when specific CathexisVision events are triggered.</li> </ul> |
| <b>Map Actions Options</b> | When triggered (see above), objects may perform the following map actions (where applicable): <ul style="list-style-type: none"> <li>• Connect to a site.</li> <li>• Perform an animation.</li> <li>• Go to a camera preset.</li> <li>• Load a map.</li> <li>• Set a PTZ relay output.</li> <li>• Show a popup menu.</li> <li>• Set a relay output.</li> <li>• Show an HTML block.</li> <li>• Show a block of text.</li> <li>• Show a device popup menu.</li> </ul>   |

#### USEFUL LINKS

To view **tutorial videos** on CathexisVision setup, visit <https://cathexisvideo.com/resources/videos>

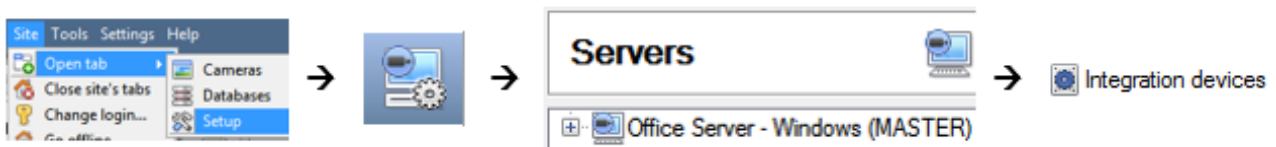
Find answers to Cathexis **Frequently Asked Questions**: <https://cathexis.crisp.help/en/?1557129162258>

## 2. Device Addition

Integrations are added on a server-by-server basis. They are managed in the Integration Devices panel, under the **Setup Tab** of the servers to which they are added.

### 2.1 The Integration Devices Panel

To get to the Integration Panel, follow this path: **Site / Open tab / Setup / Configuration icon / Server / Integration devices.**



There are two sections in the Integration Panel:

- The **Devices** list shows the integration devices attached to the integration database.
- The **Configuration** section enables editing/reviewing the device selected in the **Devices** section.

The screenshot shows the 'Integration Panel' with two main sections highlighted by red boxes:

**Devices Section:**

| Name                     | Driver                   |
|--------------------------|--------------------------|
| Cat LPR                  | Cathesis LPR             |
| Dormakaba AC Durban Site | Dormakaba Access Control |

**Configuration of 'Dormakaba AC Durban Site' Section:**

Object configuration | Object properties | Device events | Object groups | General

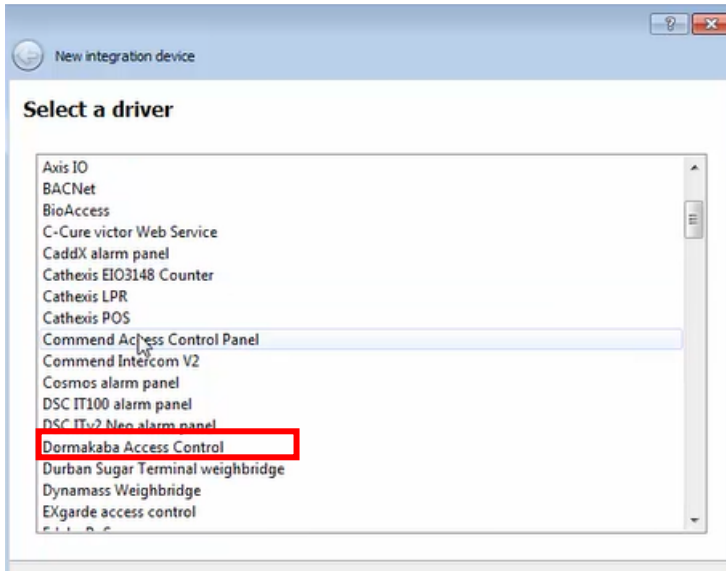
Object type: All objects

| Type                  | ID                     | Name                             |
|-----------------------|------------------------|----------------------------------|
| Communication channel | CommsChannel._default_ | Default                          |
| Device                | Device.F01FS           | TEST CH                          |
| Device                | Device.I0100010001RU   | Access_Point01(Front_door)Reader |

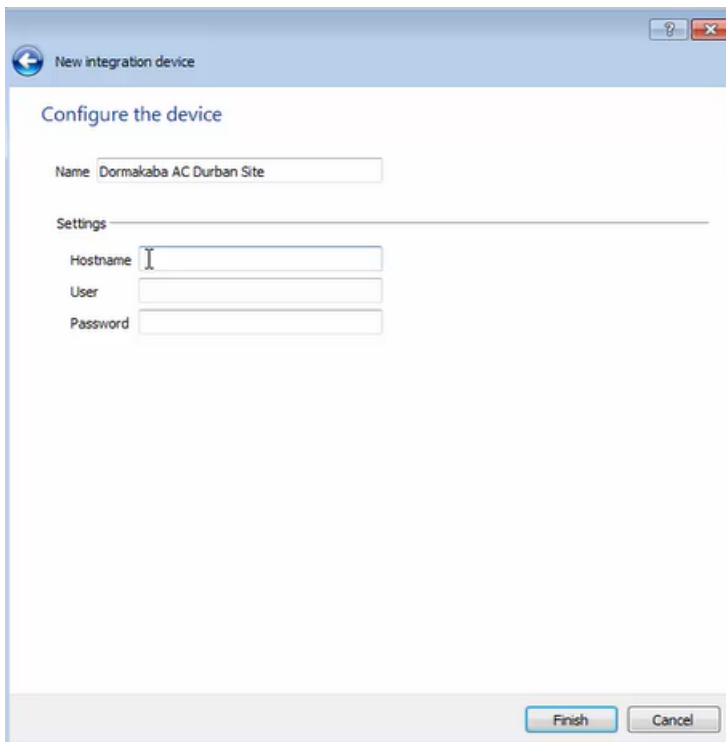
## 2.2 Add a New Device

New device

1. In the Integration Panel, navigate to the **Devices section**.
2. Click on the **New device** button on the right-hand side. This will open the addition dialogue.



3. Select the **Dormakaba access control** driver from the list, and click Next.



4. Give the device a descriptive **name**.
5. Enter the hostname of the **server**.

**Note:** This integration communicates with the device via the Dormakaba server.

6. Enter the **user** name and **password**.
7. Click **Finish**.

## 2.3 Select Device

The newly added device will show in the Devices section.

**Click on the device name to select it.**

| LWAZI-COSEC-SER - Integration devices |                         |
|---------------------------------------|-------------------------|
| Devices                               |                         |
| Name                                  | Driver                  |
| Dormakaba AC Durban Site              | Dormakaba Access Contro |

## 3. Configuration

The configuration section is divided into five main tabs. These tabs are: **Object configuration**, **Object properties**, **Device events**, **Groups**, and **General**.

### 3.1 Object Configuration Tab

The object configuration tab is where all the individual objects that comprise the integration may be viewed. Here, objects can be linked with cameras and overlays can be configured.

The Dormakaba access control system has three object types: **Device**, **System**, and **Communication channel**.

Configuration of 'Dormakaba AC Durban Site'

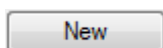
Object configuration | Object properties | Device events | Object groups | General

Object type: All objects

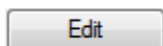
| Type                  | ID                     | Name   | Cameras | Object groups | License |
|-----------------------|------------------------|--|---------|---------------|---------|
| Communication channel | CommsChannel._default_ | Default  |         |               |         |
| Device                | Device.F01FS           | TEST CH  |         |               | ✓       |
| Device                | Device.I0100010001RU   | Access_point01(Front_door)Reader                           |         |               | ✓       |
| Device                | Device.I0100010002RU   | Access_point02(Back door) Registration unit/Reader outside |         |               | ✓       |
| Device                | Device.I0100010004BI   | Access_point02(Back door) Door opener key inside           |         |               | ✓       |
| Device                | Device.I01000101DR     | Access_point01(Front_door)                                 |         |               | ✓       |
| Device                | Device.I01000102DR     | Access_point02(Back door)                                  |         |               | ✓       |
| Device                | Device.I010001SS       | Panel01_test   |         |               | ✓       |
| System                | System.System          | System   |         |               |         |

Not all objects are automatically populated when communication to the Dormakaba device is established. Some device objects like the binary input/output will not be populated at startup, but will be added once an event triggers on them.

#### 3.1.1 Object Configuration Buttons



Click **New** to add a new object.

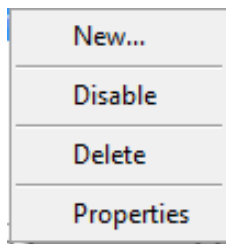


Click **Edit** to change an existing object.



Click **Delete** to remove an existing object from the CathexisVision configuration.

### 3.1.2 Object Configuration Right-Click Options



**New** will open up the dialogue to add a new object.

**Disable/Enable** allows objects to be enabled/disabled manually.

**Delete** will permanently remove this object from the list.

**Properties** will open up the object properties. The object may be edited from here: *assign cameras to this object*, and define user access levels.

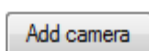
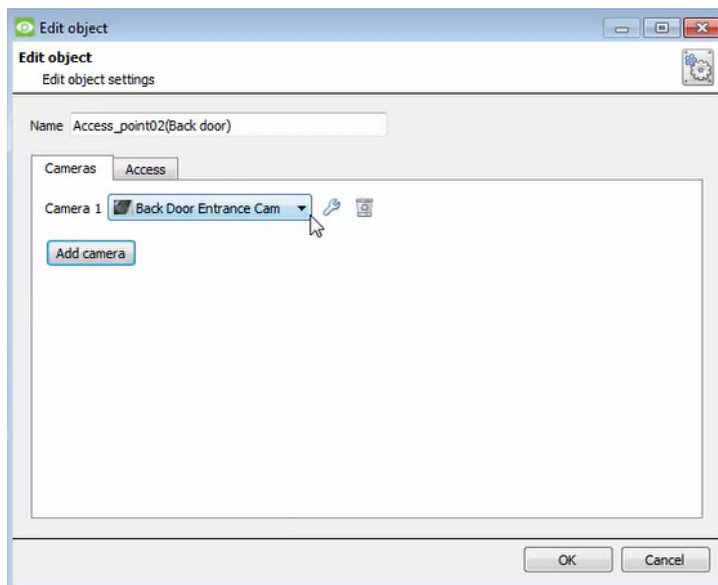
### 3.1.3 Edit Object

Open the object editing window by selecting an object from the list, and **right-clicking Properties**.

This window is where cameras are added to objects, overlays are configured, and access rights to the integration are added. These are dealt with in two tabs: **Cameras** and **Access**.

#### 3.1.3.1 Properties: Camera

Adding a camera to an object will mean that whenever there is an event on that object, the recording from that camera will be related to the time and date of the object event, in the Integration database.



To **add** a camera, click Add camera, and select the relevant model from the drop-down menu.



To **delete** a camera, click the trash icon.

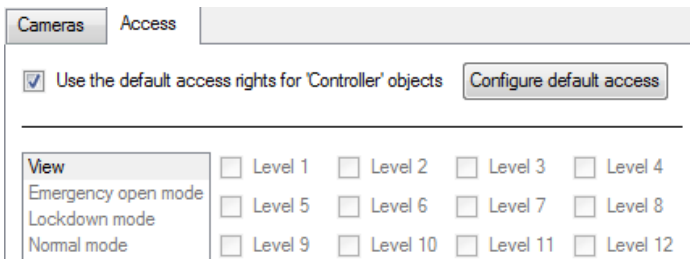


To edit individual **overlays**, click the spanner icon. See instructions below.

**Note:** If **continuous recording is not** set up on associated cameras, there is the risk of an object event triggering while the cameras are not recording. To record cameras only when an object triggers, set up **Events** that trigger a recording, when one of these objects is activated.

### 3.1.3.2 Properties: Access

**Access** can be used to protect sensitive objects, by allowing only certain user levels access to them.



There will be a list of objects, for which access level may be set.

**Note:** If **Use default access rights** is checked, make sure that those default rights have been correctly defined. Click on **Configure default access** to do this.

## 3.1.4 Configure Overlays

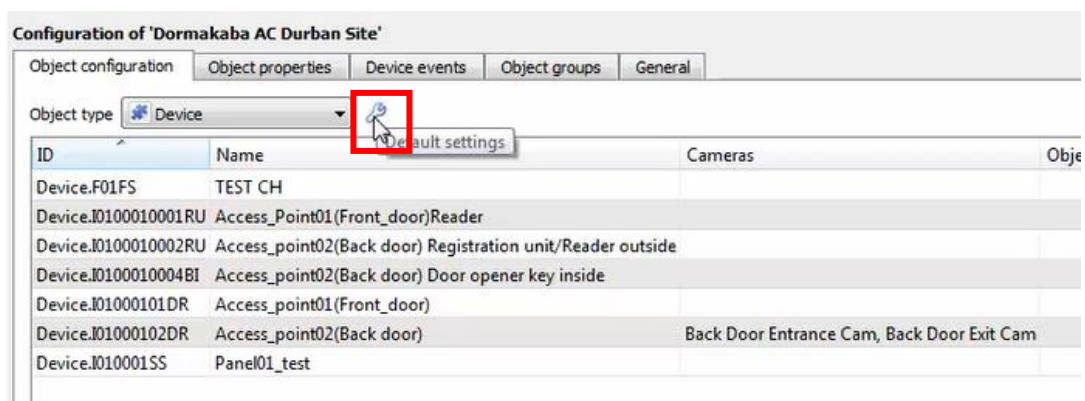
Overlays may be configured globally for all objects, or individually for selected objects (**Device objects**).

The path to follow for opening the configuration window for global or individual overlays is different, however the overlay configuration process is the same.

### 3.1.4.1 Configure Global Overlays

Global overlays may be configured for **Device** objects. If global overlays are configured for Device objects, then configuration will then apply to *all* door objects.

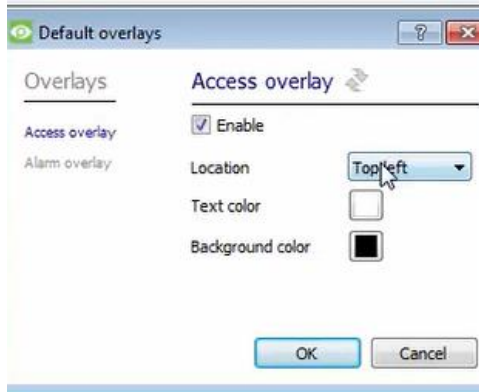
Navigate to the global overlays setup by first opening the **Object configuration tab**. Choose an object type.





1. Select the **spanner icon** next to the drop-down menu to configure the global overlays for the chosen object, e.g. door.

A new window will open.



2. Select either **Access overlay** or **Alarm overlay** on the left hand side.
3. **Enable:** Check the box to enable overlay configuration.
4. Define the Text size by selecting from the drop-down menu.
5. Define the **Location** of the overlay by selecting from the drop-down menu.
6. Chose the **Text colour** and **Background colour** of the overlay stream.

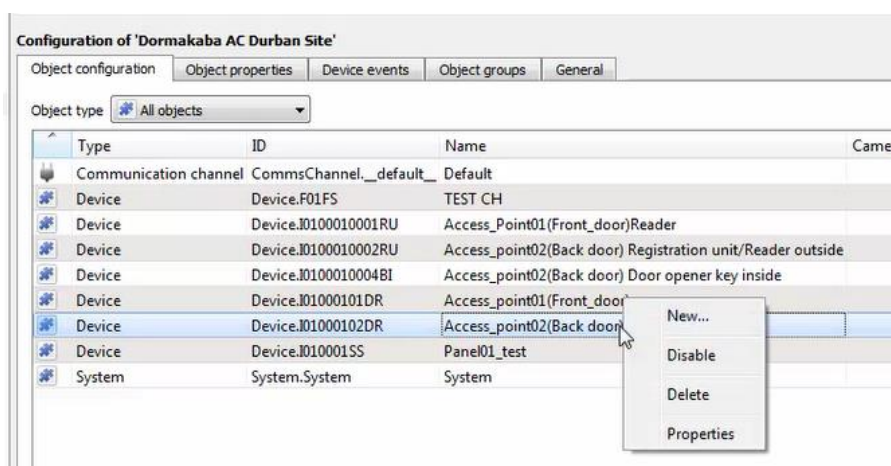


Click the colour boxes to bring up a colour chart.

### 3.1.4.2 Configure Individual Overlays

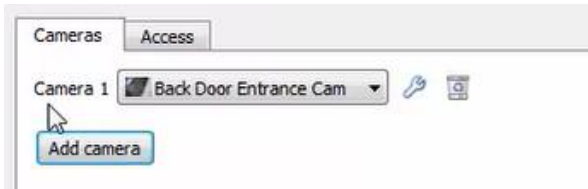
For individual devices, there is a choice to use the global overlay settings (above), which apply to all objects, or to configure the settings for an individual device.

For example, the overlays for the camera on a door might be configured to show up with yellow text, while all other events display in red.



1. Right-click an item in the list and select **Properties** to edit the object.





2. **Add a camera** to the object, or, select a camera from the drop-down menu.

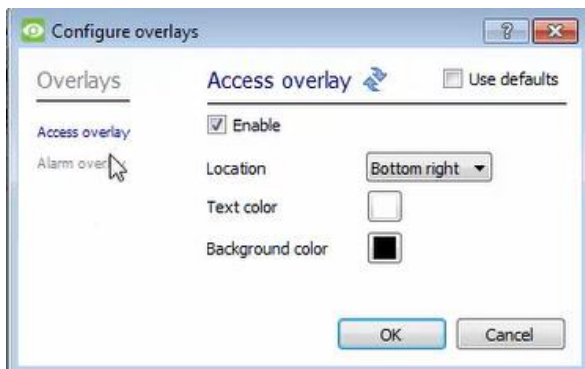


3. Then **click the settings** icon that appears next to the camera name.



4. **Uncheck the 'Use defaults'** box to configure the overlays.

5. Select either **Access overlay** or **Alarm overlay** on the left hand side.



6. **Enable:** Check the box to enable overlay configuration.

7. Define the **Text size** by selecting from the drop-down menu.

8. Define the **Location** of the overlay by selecting from the drop-down menu.

9. Define the **Text colour** and **Background colour** of the overlay stream.



Click the colour boxes to bring up a colour chart.

## 3.2 Objects Properties Tab

The Object properties tab allows objects to be viewed, sorted by type.

In the case of the Dormakaba access control system, there is the option of viewing by **Device**, **System**, and **Communication channel**.

Configuration of 'Dormakaba AC Durban Site'

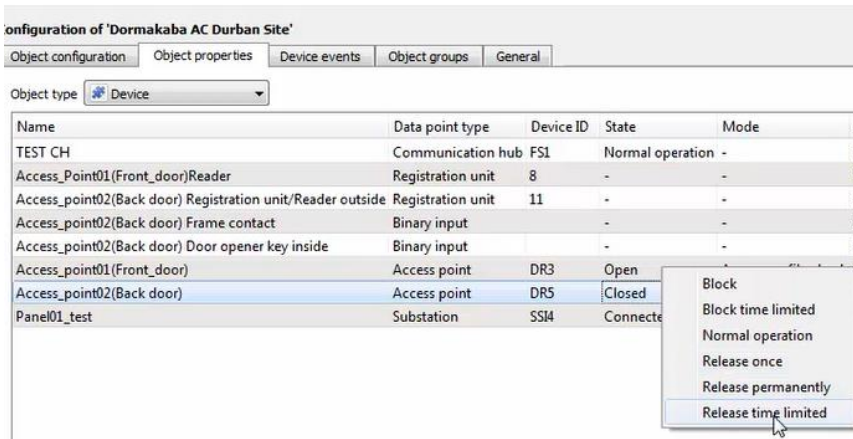
Object configuration | Object properties | Device events | Object groups | General

| Name   | Data point type   | Device ID | State            | Mode | Address       | Licensed |
|--|-------------------|-----------|------------------|------|---------------|----------|
| TEST CH  | Communication hub | FS1       | Normal operation | -    | F01FS         | ✓        |
| Access_point01(Front_door)Reader                           | Registration unit | 8         | -                | -    | I0100010001RU | ✓        |
| Access_point02(Back door) Registration unit/Reader outside | Registration unit | 11        | -                | -    | I0100010002RU | ✓        |
| Access_point02(Back door) Frame contact                    | Binary input      | -         | -                | -    | I0100010003BI | ✓        |

Commands can be configured from the Object properties tab.

### 3.2.1 Controlling Commands on Dormakaba

Select the object from the drop-down menu in the **Object properties** tab. In this case, the object type is **Door**.



1. **Right-click** an item on the list.
2. Choose the **command** which appears.
3. If a new window open, fill in the fields.

Commands will reflect in the Device events tab. Click the Device events tab to view.

The following commands are available:

| Object | Command  |
|--------|--|
| Device | Block<br>Block time limited<br>Normal operation<br>Release once<br>Release permanently<br>Release time limited |

### 3.3 Device Events Tab

The Device events tab lists real-time events happening on this device. Installers can ensure that the integration is functioning, and monitor the Events happening on site.

Return to CathexisVision and navigate to the Integration Panel. Open the Device events tab.



Use the drop-down menu to sort the events. Choose between displaying: **All events**, and **Log** (device events).


## 3.4 Object Groups Tab

Groups of *the same type of object* can be created.



**Tip:** This is useful when setting up events, because events can be triggered by an object group. (E.g. a group will trigger an event if any of the doors in that group are triggered.)



### 3.4.1 Create a Group

-  1. To **create** a group, click on this icon.  
A new dialogue box will open.



2. Give the group a descriptive **Group name**.
3. Click on the drop-down menu to select the **object type** to group.

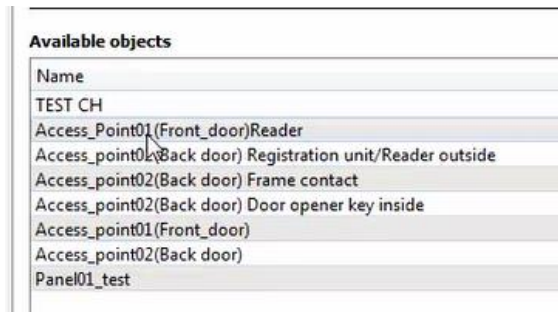
**Note:** Once a group has been created, the object type of the group cannot be edited.

-  To **edit** a group, click on this icon.
-  To **delete** a group, click on this icon.

The next step is to add individual objects to the group.

### 3.4.2 Add or Remove Objects

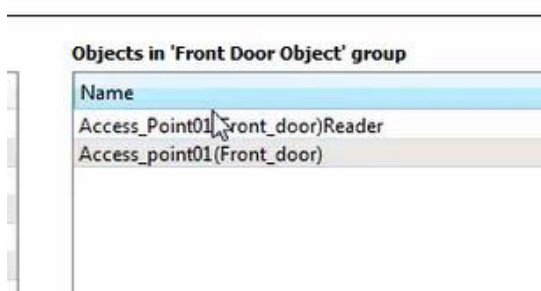
After creating a group, a list of all the available objects for that group will be displayed in the Available objects panel, on the left-hand side. Objects can then be chosen from this list, and added to the group.



➡ To **add** these objects to the group, select them from the list, and **click on the right arrow**.

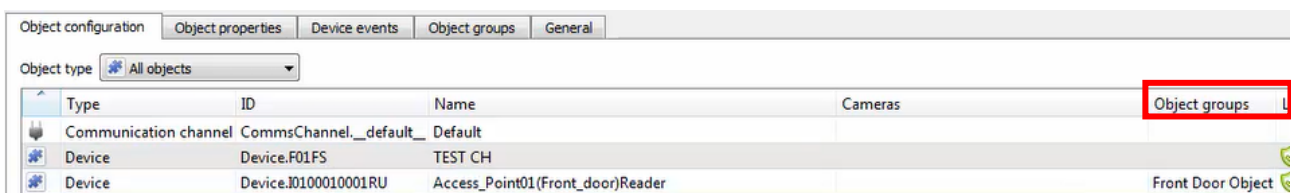
⬅ To **remove** these objects from the group, select them and **click on the left arrow**.

**Note:** Multiple objects may be selected at a time.



Once individual objects have been added to the group using the arrows (above), they will appear in the section on the right-hand side.

The object group information will also reflect in the Object configuration tab:



### 3.5 General Tab

The General tab of the Configuration section (Integration panel) deals with the integration database. Setup must be completed here, before the Databases tab can be used to search events and view associated footage.

From the General tab, the user must:

- *Select* an existing database, or
- Configure a *new* database.

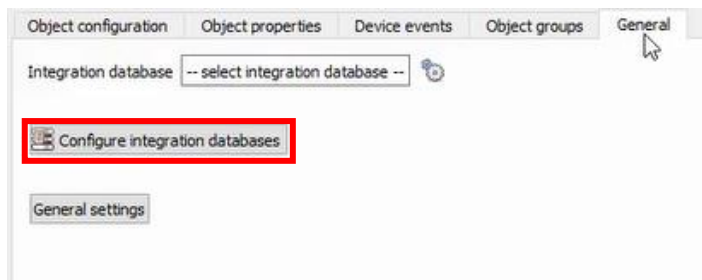
**Note:** Each integrated device needs to be attached to an integration database. Without setting up/adding a database here, the integration will not function properly within the CathexisVision system.

### 3.5.1 Configure a New Database

- The first time an integration database is added, the general integration database will need to be *initialised*.
- Once the general integration database has been initialised, then a database for a *specific integration* can be created.

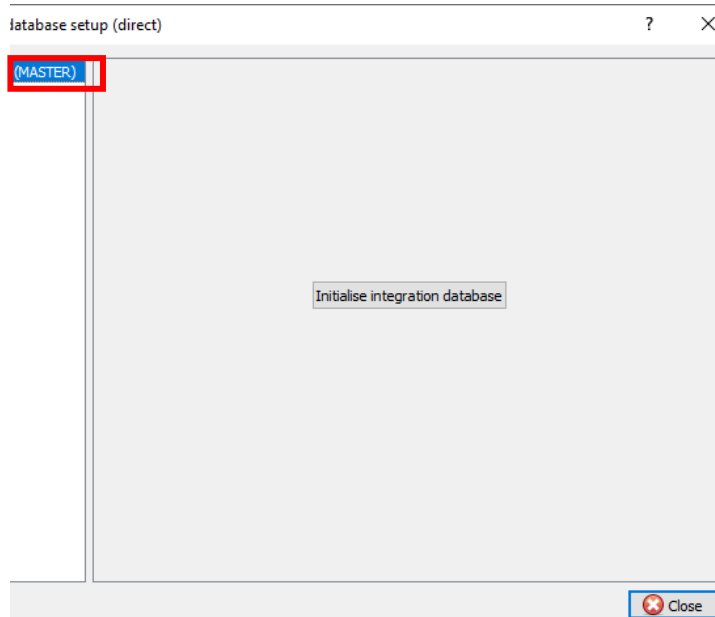
#### 3.5.1.1 Initialise the Integration Database

If an integration database has not yet been created, follow the steps below.



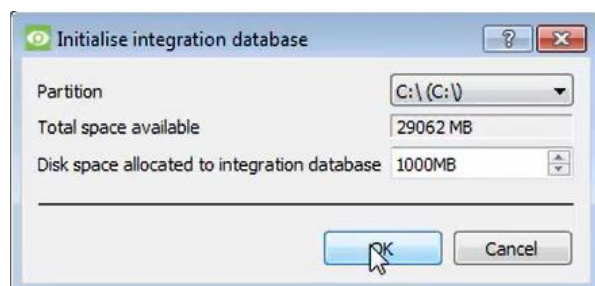
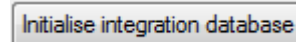
1. Click the **Configure integration databases** button from the General tab.

This opens the Integration database setup window.



2. **Select the unit** to which the database will be added, from the list on the left.

3. Then, click **Initialise integration database**.



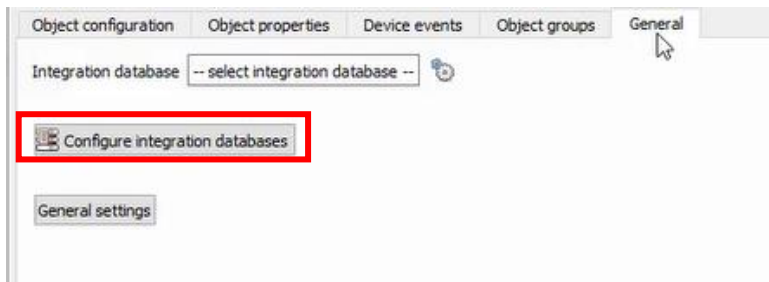
4. Choose the **partition** on which the database will be created.

5. Select **disk space** allocation.

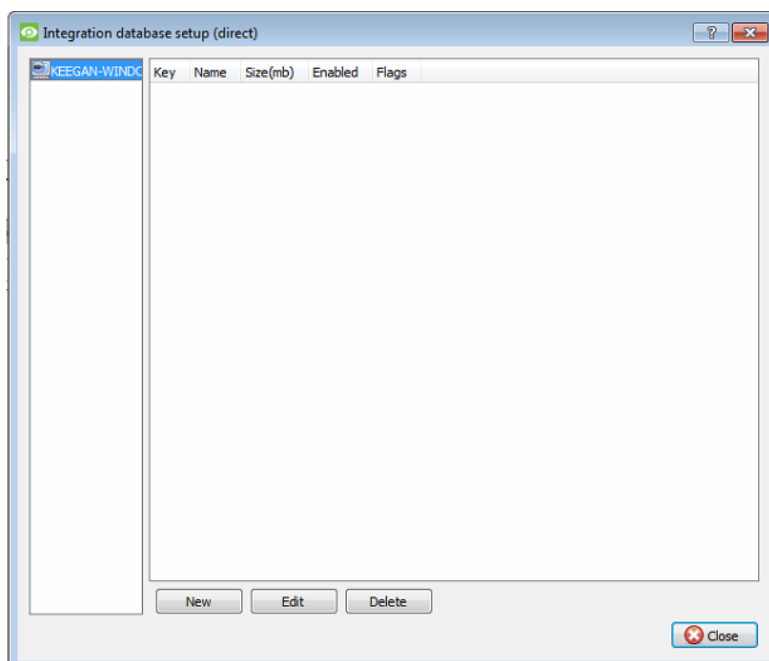
6. Click **OK**.

### 3.5.1.2 Add a New Devices Database

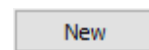
After initialisation, the database can be added to the integration.



1. To add a new database, click the **Configure integration databases button** from the General tab.

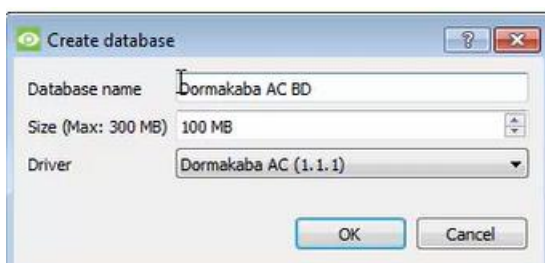


This opens the integration database setup window.

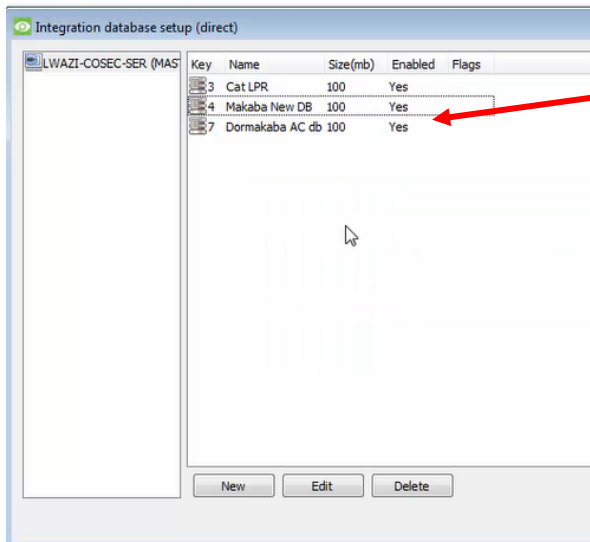


2. Click the **New** button.

A dialogue will appear for creating the integration database.



3. Give the database a descriptive **Database Name**.
4. Allocate a **Size** to the new device database.
5. Select the device **Driver (Dormakaba)**, from the drop-down list.
6. Click **OK** to create the database.

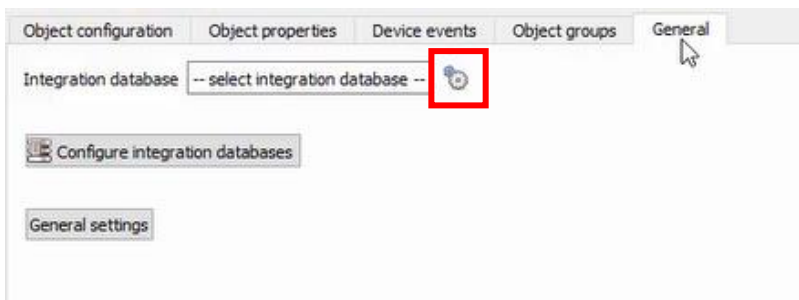


The newly created database will appear in the Integration database setup panel.

7. Click **Close** to return to the General tab.

### 3.5.2 Select the Dormakaba Integration Database

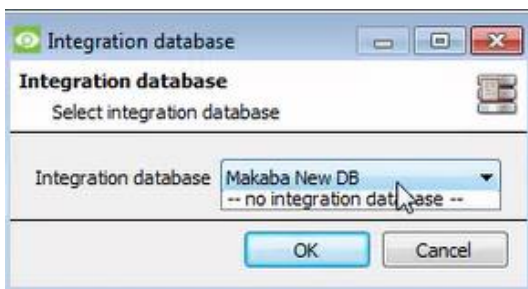
Once a **Dormakaba** database has been created, it must be actively selected.



1. Return to the General tab.

2. Then, click the **settings icon**.

A dialogue will appear. Only databases which relate to the device being added should appear.

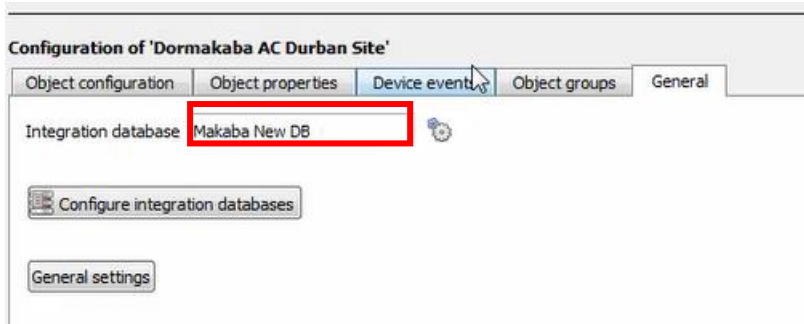


3. Select the **Dormakaba database** from the drop-down menu.

4. Then click **OK**.

Once selected, the database will reflect in the General Tab as shown below.





**Note:** The information on setting up an integration database may be found in the **Integration Devices General Settings** section of the *CathexisVision Setup Manual*.



## 4. CathesisVision System Events

A CathesisVision event has a trigger, which causes an action. Set integrated devices to act as triggers, or as actions. This document describes the **Dormakaba** specific aspects of Events. There is a comprehensive guide to CathesisVision Events in the main setup manual.

Most of the data that CathesisVision receives from a device is presented in the Events interface. This gives the user a full range of options. As a result, some of the options presented in the interface may be *impractical* as an event trigger, or action.

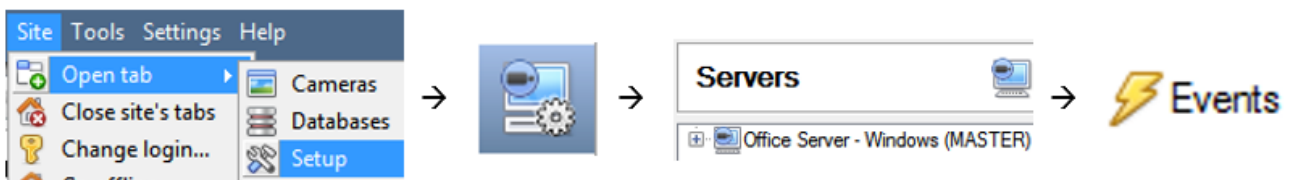
### 4.1 Event Window

Events in CathesisVision are set up via the Event Window, which has four tabs.

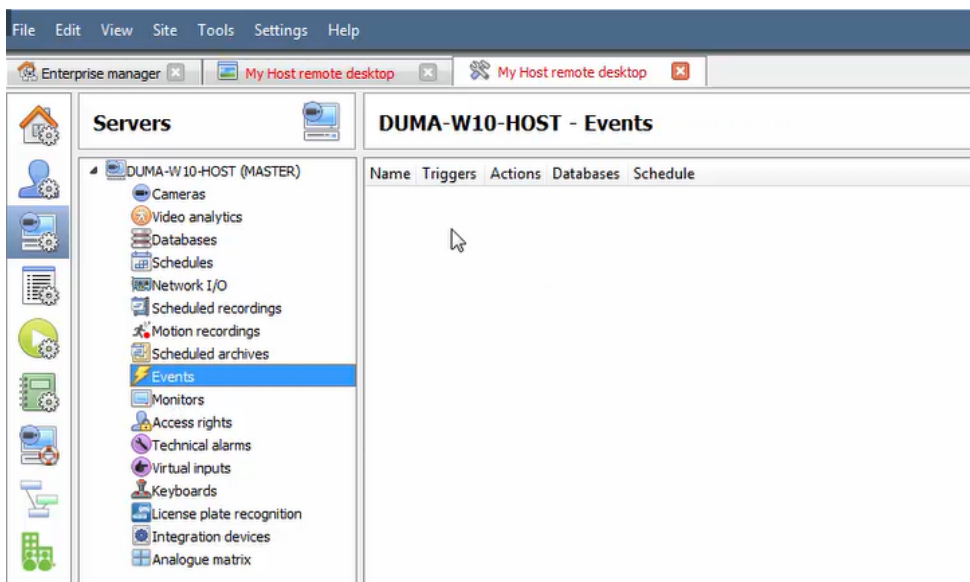
- In the **General Tab**, an event is given a name, description, schedule and priority.
- In the **Triggers Tab** the trigger/s for the event is defined.
- In the **Actions Tab** the action/s which the event takes, is defined.
- In the **Resources Tab** the various site resources which can be used as part of an event are defined.

### 4.2 Creating an Event

To create an event using the Dormakaba access control system, navigate to the Events management area by following the sequence: **Open Tab / Setup / Servers / Master Server / Events**. This is shown below.



This will allow the user to enter the Events management area:





Once in Events management area, click the **New** icon at the bottom of the screen.

This will open up the **New Event window**.

The new event window has four tabs which can be used to set up the event: General, Triggers, Actions, and Resources.

## 4.3 General Tab

Create a new event under the General tab by filling in the fields.

1. Give the event a descriptive **Name**.
2. Set up a **Schedule** if desired by clicking the icon.
2. Select a **Priority**.
3. A description may be entered. Or, modify the **Description** if relevant according to the instructions below.

**Note for group triggers:** For an event to be databased under the name of a specific object, and not the name of the triggering group, modify the Description field in the **General tab** of the Event setup.

- Click on the question mark icon to see a list of available descriptions and instructions for how to enter these descriptions.

## 4.4 Triggers Tab

A trigger is a user-defined input, for example, the user may choose to define the trigger as a door opening on an access control system.

Once the user defines the *trigger*, it can be used to cause a subsequent *action*.

The user will need to click on the hyperlinks (depicted alongside) to set up the trigger.

The subsections below provide instructions.

### 4.4.1 Set the Device as the Trigger

For a new event, the trigger type will default to “standard triggers”. The user will need to change this to the Dormakaba system.



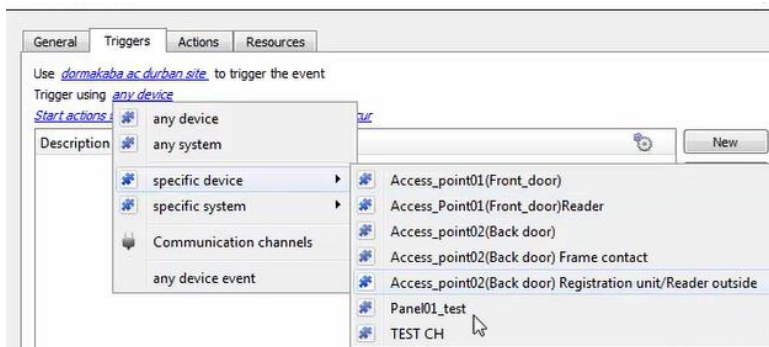
1. To change the event trigger, **click on “standard triggers”** (the hyperlink after the word “Use”).

This will open a drop-down menu with more options.

2. To set **Dormakaba** as the trigger, **select the name** from the drop-down menu.

### 4.4.2 Trigger Types (Trigger Using)

It is useful to think of this as a **master trigger type**.



1. **Click on the hyperlink** after the words “Trigger using”.

This will open a drop-down menu.

2. **Click an option** from the menu to select.

See the table below for descriptions of the options on the drop-down menu.

| MENU OPTION              | DESCRIPTION OF TRIGGER TYPE  |
|--------------------------|--|
| <b>Any [device]</b>      | This will trigger if anything happens on any device i.e. any door.           |
| <b>Any system</b>        | This will trigger if anything happens on any Dormakaba system.               |
| <b>Specific [device]</b> | This will trigger on the specific object chosen for example, Access_point01. |
| <b>Specific system</b>   | This will trigger if anything happens on a specific Dormakaba system         |
| <b>Any device event</b>  | This will trigger, initially, when any event occurs on the integration.      |

### 4.4.3 While/When and Any/All

The third row of hyperlinks further specifies when the event triggers. The user will choose to trigger either based on a *device event* occurring, or based on an *object property*.



To change these settings, click on the blue hyperlinks in the *third* row as shown in the image on the left.

The user can choose the option to:

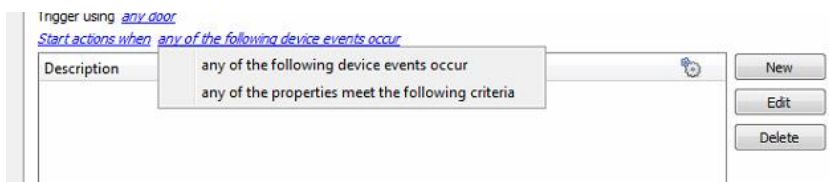
- **start actions when** any of the properties meet user-configured *criteria*, or any user-configured *device events* occur, or
- **perform actions while** any/all of the properties meet user-configured *criteria*.

|                                       |  |
|---------------------------------------|--|
| <a href="#">Start actions when</a>    | <a href="#">any of the properties meet the following criteria</a><br><a href="#">any of the following device events occur</a>          |
| <a href="#">Perform actions while</a> | <a href="#">any</a> of the properties meet the following criteria<br><a href="#">all</a> of the properties meet the following criteria |

### 4.4.4 Define the Trigger (“Any Device Event” Option)

After using the hyperlinks to set up how the trigger will be defined, the user may proceed to creating a new *device event*.

One of these options is to select *any of the following device events occur*.



Pictured alongside is the **Triggers tab** where a user selects *any of the following device events occur*.

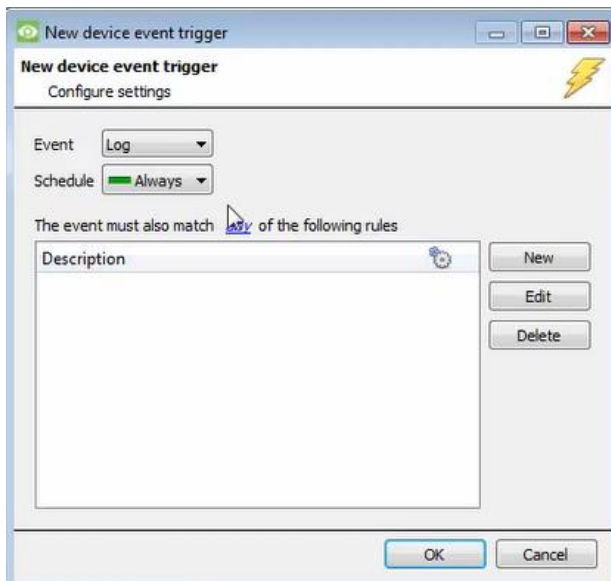


Click on **New** in the Triggers tab.

Clicking on New will bring up the **New device event trigger** dialogue box.

#### 4.4.4.1 New Device Event Trigger

The user will then need to configure the new device event trigger.



1. Select the **type of Event** where applicable.
2. Choose a **schedule**.
3. Choose whether **any**, or **all** constraints need to be fulfilled to set off a trigger.
4. Use the **new/edit/delete** buttons on the right-hand side to add a device event rule (a constraint). Follow the instructions below.

#### 4.4.4.2 New Device Event Rule

**Note:** From within the **New device event trigger** window (above), it is necessary to set further constraints. Multiple constraints can be set. If constraints are not defined, every device event will trigger this event.



1. To configure a New device event rule, **click on New** in the New device event trigger window.

This will bring up a further window, called **New device event rule**.

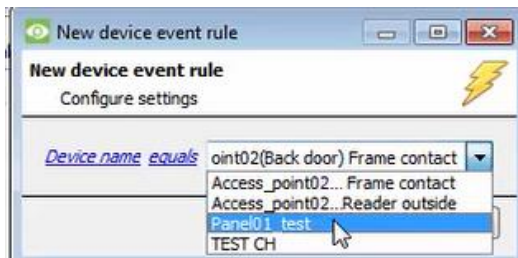


2. Change the constraint by **clicking on the first hyperlink** (which is “Log type” in this example).  
This will bring up the full list of available constraints.
3. **Click an item** to select it.
4. To modify the way this constraint will be treated, **click on the second hyperlink** (which is “equals” in the example). This will display further options.
5. Click an option to select.

Follow the instructions below to define the constraint.

### Defining a Constraint: Drop-Down Menu or Written Description

When all available options are known to CathexisVision, a drop-down menu will appear alongside the chosen constraint.



6. **Click an item** from the drop-down menu to select.

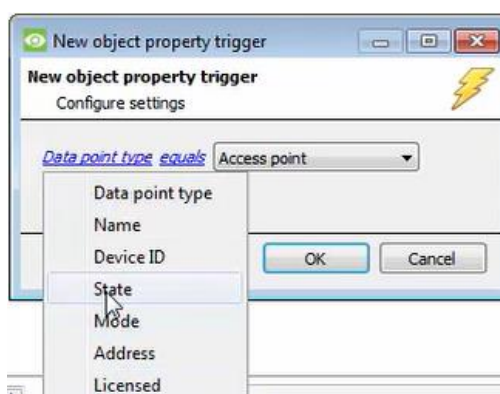
Or, if the variables for a constraint are *not* pre-defined, fill them in manually.

## 4.4.5 Define the Trigger (“Properties Meeting Criteria” Option)

If the user has defined the trigger by choosing according to *properties meeting criteria*, the **New object property trigger** dialogue box will open.

- In these instances, further constraints do not need be set, since they are being added one at a time.
- This option is better if a few triggers have been selected.
- This is also true for groups, since a group may only be made up of one object type.

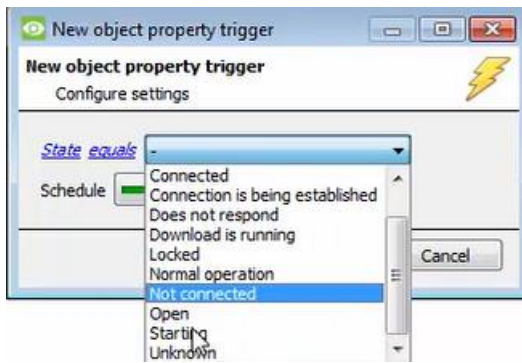
### 4.4.5.1 New Object Property Trigger: Configure Settings



1. **Select the event type** by clicking the first hyperlink.
2. **Further define** the rule by clicking the second hyperlink.

### Defining a Constraint: Drop-Down Menu or Written Description

When all available options are known to CathexisVision, a drop-down menu will appear alongside the chosen constraint.



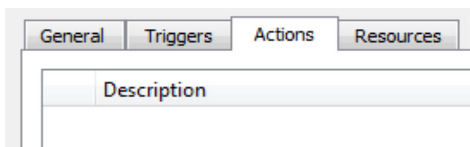
3. Click an item from the drop-down menu to select.



4. If the variables are not pre-defined, fill them in manually.

**Note:** Descriptions are *case sensitive* and must be identical to how they appear in the Object Properties tab.

## 4.5 Actions Tab

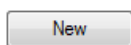


Having defined the triggers that will initiate an event, the user will need to define Actions.

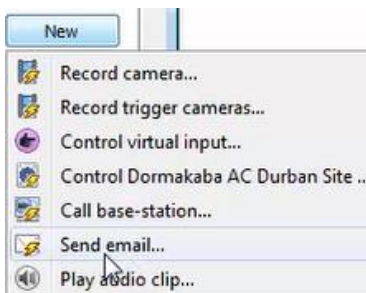
Select the **Actions tab** from the **New event** window.

One of the available actions will be to *control* a **Dormakaba** device.

### 4.5.1 Adding an Action



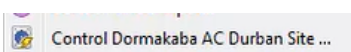
1. To add an action, click New in the Actions tab.



A list of **available actions** will appear. The drop-down contains all the available **action types**.

2. Select an option, for example, Record Camera.

#### 4.5.1.1 Actions: Control Device



1. Click a Control device option to bring up the **control device** dialogue.



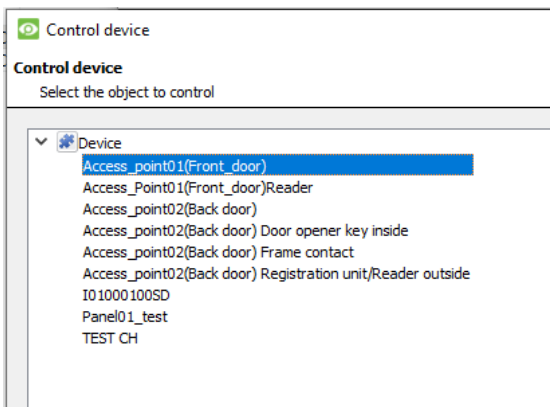
Under the **Device** tab, the user defines how the device will be controlled. Under the **Advanced** tab, the scheduling of the action is defined.

### Configure Command Window: Device Tab



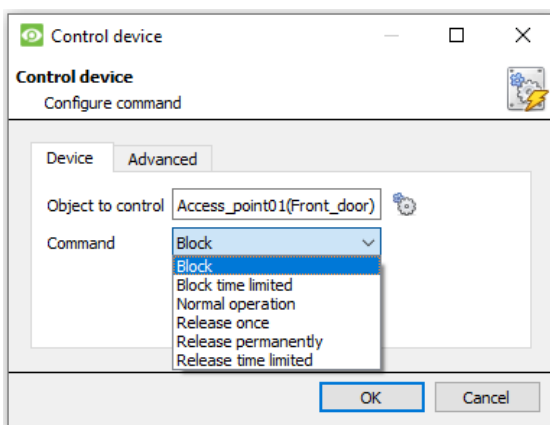
2. To select an **Object**, click on the **settings icon**.

This shows all the Objects available on the **Dormakaba** integration.



3. Under the object type parent group (Device), **select the individual objects** to control.

4. Click **OK**.

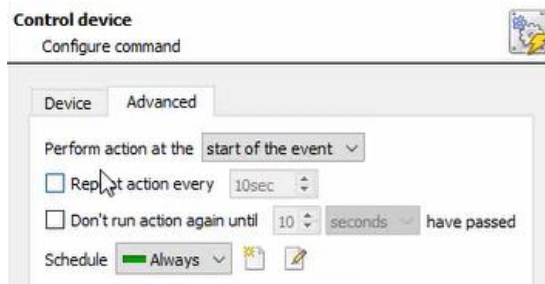


5. The **command** drop-down will change to represent the commands available to that Object.

6. Click **OK**.



## Configure Command Window: Advanced Tab



7. Choose to **perform action**: either **at the start** of the event, or once the event triggers have subsided.

The two checkboxes allow the user to set the action to repeat every few seconds, and/or not run for a period after it has triggered.

8. **Select a schedule**. This is a standard Cathesis schedule, which may be applied to the actions.

### 4.5.1.2 Actions: Record Camera

If the user has selected a new action to record camera, the following setup steps are required



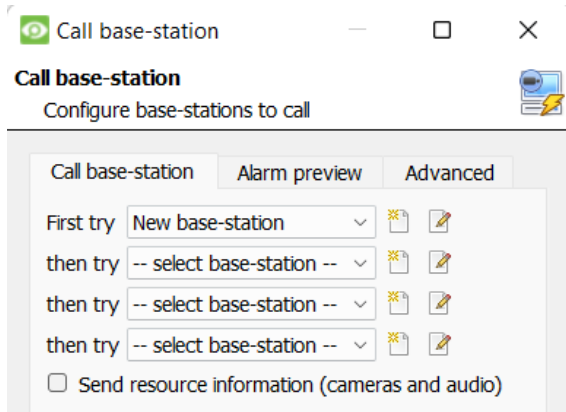
Click the drop-down menus to see more options and click to select the appropriate option.

1. Choose the **camera** appropriate for the event.
2. Choose the **database** to which the video recordings will be saved.
3. Edit **Recording channel**, **frame rate**, and **recording duration** if necessary.
4. Next to **pre-events**, increase the amount of time when recording begins before the event.
5. Click OK.

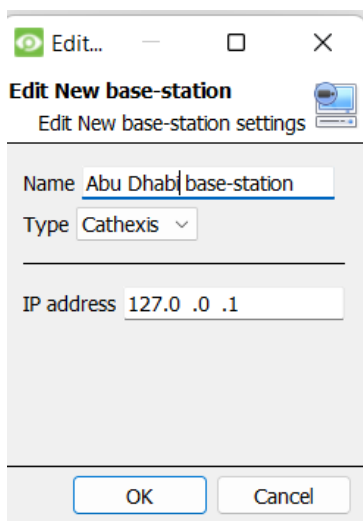
### 4.5.1.3 Actions: Call Base-Station

If the user has selected a new action to call base-station, the following setup steps are required. Use the tabs along the top of the window.

### Call Base-Station Tab



1. Click the **edit icon** next to a base-station to configure.

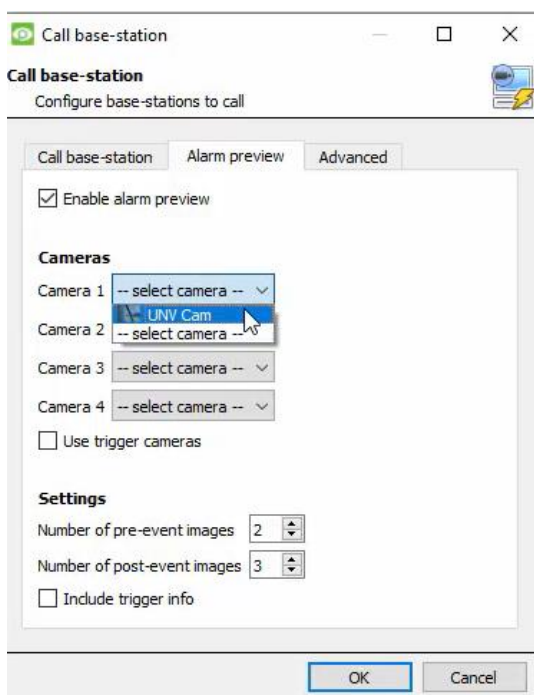


2. In the window that opens, edit or enter the **name** of the base-station and select the **type**.

3. Ensure that the **correct IP address** has been entered. This is the IP to receive the alarms on the specific unit.

4. Click OK.

### Alarm Preview Tab

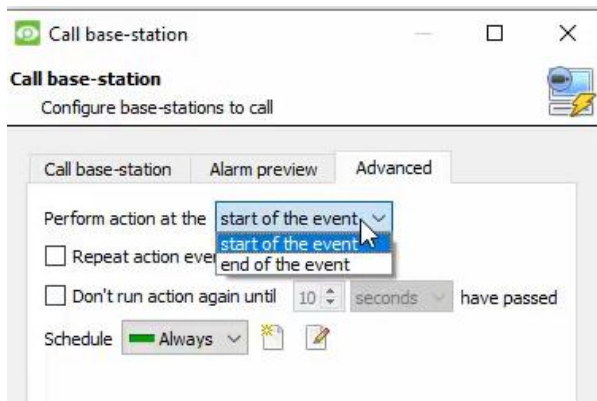


5. **Click the checkbox** to Enable alarm preview.

6. Select an appropriate camera/s.

7. Click OK.

## Advanced

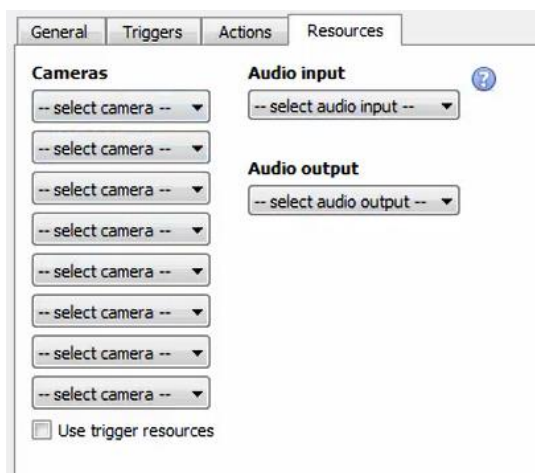


- From the Advanced tab, **choose** to *perform the action* either at the start of the event, or once the event triggers have subsided.

The two checkboxes allow the user to set the action to repeat every few seconds, and/or not run for a period after it has triggered.

- Select the schedule.** This is a standard Cathexis schedule, which may be applied to the actions.

## 4.6 Resources Tab



In the Resources tab, users can select the cameras, audio input, and audio output to be used.

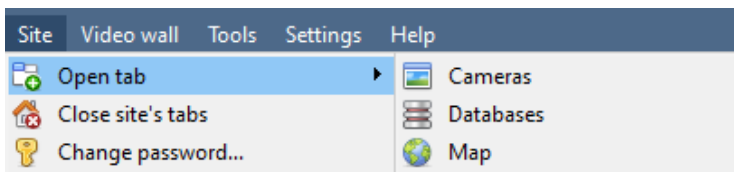
The default is to select “Use trigger resources.”

## 5. Camera Tab Overlay Setup

Once all the relevant settings have been configured, the fence system *overlay* can be pulled through over the appropriate camera feed.

**Note:** Cameras must have already been added to device objects, and overlays need to have been configured.

### 5.1 Navigate to the Cameras Tab



To see the camera feeds, go to the Cameras tab by following this path.

**Site / Open tab / Cameras**

### 5.2 Video Feed Options Panel



To bring up the overlay, click the arrow to the left of the screen. This will pop out the Video feed options panel.

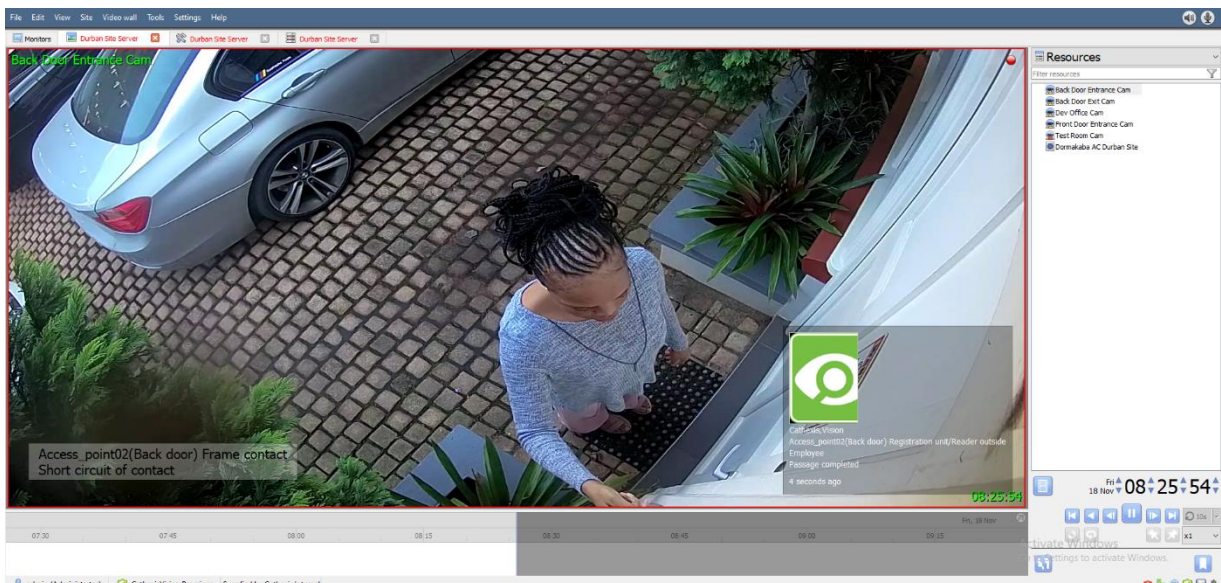
The Video feed options panel will present options specific to the settings that have been configured.

#### 5.2.1 Select the Overlay



1. **Clicking** this icon will bring up the overlay options for this video feed.
2. **Select the device and enable** the overlay.

The overlay will appear over the video feed, as below.



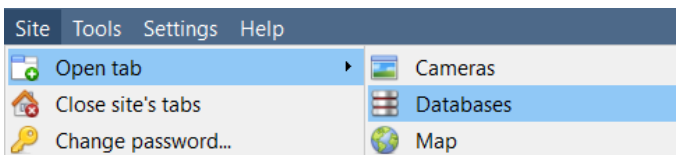
## 6. Database

The Databases tab allows the user to navigate to the databased entries for each individual database. In the Databases tab, each database is presented as a table. It has built in filters, and the ability to navigate by timestamp. If a database entry has an associated recording, this recording can be launched from within the Databases tab.

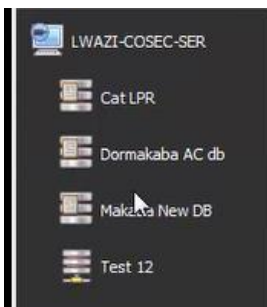
Most integrations will have a different database presentation, and unique filters, due to the different parameters sent to CathexisVision by the integrated device.

### 6.1 Navigate to the Database

To view information stored in the Integration, first navigate to the Databases Tab:



1. Follow the path on the left: **Site / Open tab / Databases.**



2. Select the **Dormakaba** integration database from the database panel that opens on the left-hand side.







The databases are ordered under the NVRs to which they are attached.

Below is an image of a **Dormakaba** database.

| Time                | Log type | Device address | Device name  | Text                     |
|---------------------|----------|----------------|--|--------------------------|
| 2022-11-08 12:37:19 | Access   | I0100010002RU  | Access_point02(Back door) Registration unit/Reader outside | Access authorised        |
| 2022-11-08 12:37:20 | Alarm    | I0100010003BI  | Access_point02(Back door) Frame contact                    | Short circuit of contact |
| 2022-11-08 12:37:20 | Access   | I0100010002RU  | Access_point02(Back door) Registration unit/Reader outside | Passage completed        |
| 2022-11-08 12:42:49 | Alarm    | I0100010003BI  | Access_point02(Back door) Frame contact                    | Interruption of contact  |
| 2022-11-08 12:42:49 | Alarm    | I0100010003BI  | Access_point02(Back door) Frame contact                    | Short circuit of contact |

## 6.2 Database Interface

|   |  |
|---|--|
| <p style="text-align: center;"><b>1</b></p> <p><b>View</b></p>        | <p>Change the way that the database is presented. Some integration databases have multiple view options.</p> <p>Click the field to see the available options in the drop-down menu.</p> <div style="border: 1px solid gray; padding: 2px; width: fit-content;">View All ▾</div> <p>The database view presentations available for the <b>Dormakaba</b> integration are:</p> <ul style="list-style-type: none"> <li>• All</li> </ul>   |
| <p style="text-align: center;"><b>2</b></p> <p><b>Sorted By</b></p>   | <p>Sort the Events based on the following parameter: <b>Time</b>.</p> <div style="border: 1px solid gray; padding: 2px; width: fit-content;">sorted by Time ▾</div>  |
| <p style="text-align: center;"><b>3</b></p> <p><b>Easy Search</b></p> | <p>Easy Search options allow quick searching of the database.</p> <p>Click the field to see the available options in the drop-down menu.</p> <div style="border: 1px solid gray; padding: 2px; width: fit-content;"> <span>🔍</span> -- No EasySearch -- ▾             <span style="margin-left: 10px;">🔍</span> <span style="margin-left: 10px;">📄</span> <span style="margin-left: 10px;">📄</span> </div> <p>The following options are available:</p> <ul style="list-style-type: none"> <li>• Time</li> <li>• Log type</li> <li>• Device address</li> <li>• Device name</li> <li>• Text</li> <li>• Person ID</li> <li>• Personal number</li> <li>• Name</li> <li>• Personnel type</li> <li>• Card number</li> <li>• Card role</li> <li>• Data point type</li> <li>• Substat F Stat</li> <li>• Substat on/off</li> <li>• Log ID internal</li> </ul> |
| <p style="text-align: center;"><b>4</b></p>                           | <p>Filter offers a more advanced manner of sorting information in the Integration Database table.</p>  |

|  |  |
|--|--|
| <p><b>Filter</b></p>   | <p>Once the filters dialogue is open, the following options are available:</p> <ol style="list-style-type: none"> <li>To <b>enable</b> filters, check this box: <input checked="" type="checkbox"/> Enable filters</li> <li>To <b>add</b> a new filter, click on .<br/>The filter icon  will change to  when filters are active.</li> <li>To <b>delete</b> an added filter, click .</li> </ol> <p>A <b>Time range</b>, within which the search will be conducted, may also be set.</p> <p>To set a Time range, click on the <b>blue hyperlinked text</b> which specifies time (e.g. in the week to date). This will bring up the following dialogue box, where the time range can be defined:</p> <div data-bbox="443 676 1375 1146" style="border: 1px solid #ccc; padding: 10px; background-color: #f9f9f9;"> <p> Set time range <span style="float: right;">? ×</span></p> <p>Time range is</p> <p><input checked="" type="radio"/> Preset <span style="margin-left: 20px;">Week to date ▾</span></p> <p><input type="radio"/> Specific From <span style="margin-left: 5px;">23 ▾</span> <span style="margin-left: 10px;">June ▾</span> <span style="margin-left: 10px;">2022 ▾</span> <span style="margin-left: 10px;">08 ▾</span> <span style="margin-left: 10px;">00 ▾</span> <span style="margin-left: 10px;">00 ▾</span></p> <p style="margin-left: 20px;">to <span style="margin-left: 5px;">23 ▾</span> <span style="margin-left: 10px;">June ▾</span> <span style="margin-left: 10px;">2022 ▾</span> <span style="margin-left: 10px;">08 ▾</span> <span style="margin-left: 10px;">00 ▾</span> <span style="margin-left: 10px;">00 ▾</span></p> <p><input type="radio"/> Previous <span style="margin-left: 20px;">1 ▾</span> <span style="margin-left: 10px;">Hours ▾</span></p> <p><input type="radio"/> Period of <span style="margin-left: 20px;">1 ▾</span> <span style="margin-left: 10px;">Hours ▾</span> from <span style="margin-left: 10px;">00h00 ▾</span> <span style="margin-left: 10px;">23 ▾</span> <span style="margin-left: 10px;">June ▾</span> <span style="margin-left: 10px;">2022 ▾</span></p> <p style="text-align: right;"><span style="border: 1px solid #0070c0; padding: 2px 10px;">OK</span> <span style="border: 1px solid #ccc; padding: 2px 10px; margin-left: 20px;">Cancel</span></p> </div> <p><b>Note:</b></p> <ol style="list-style-type: none"> <li>Multiple filters may be run simultaneously. Filters with the same parameters may be run more than once.</li> <li>To change a filter, click on the blue hyperlinked text.</li> </ol> |
| <p style="text-align: center;"><b>5</b></p> <p><b>Export</b></p>         | <p>Generate metadatabase reports in PDF or CSV format. See below.</p>  |
| <p style="text-align: center;"><b>6</b></p> <p><b>Manage Reports</b></p> | <p>Generate scheduled metadatabase reports. See below.</p>   |
| <p style="text-align: center;"><b>7</b></p> <p><b>Go to Time</b></p>     | <p>This navigates to a specific point in time, down to the second. To navigate to a timestamp, set the time using the time and date boxes.</p> <p> Then, click on the arrow icon.</p>   |

### 6.2.1 Generate and Export Metadatabase Reports



1. Click the save icon to open the Export window.



2. Select the **Period** to export, and enter the required details.

3. Click **Next**.


4. Select the **Format** to export the report in; either CSV or PDF.

See below for the two options.

### 6.2.1.1 Export CSV

1. Select **CSV Format**.

2. Edit the **Filename** by entering it into the text field (replacing **report.csv**).

 Or, click the folder to choose a new save folder and filename.


### 6.2.1.2 Export PDF

1. Select **PDF Format**.

2. Give the PDF a **Heading**.

3. Select either **Landscape** or **Portrait Orientation** of the PDF.

4. Edit the **Filename** by entering it into the text field (replacing **report.csv**).

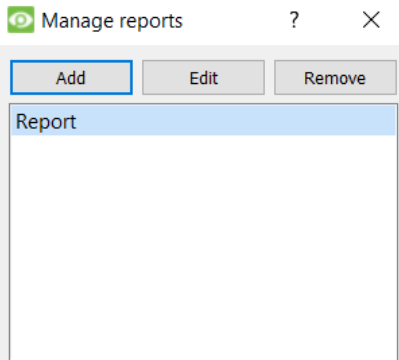
 Or, click the folder icon to choose a new save folder and filename.



## 6.2.2 Scheduled Metadatabase Reports



1. Click the report icon to open the scheduled report window.

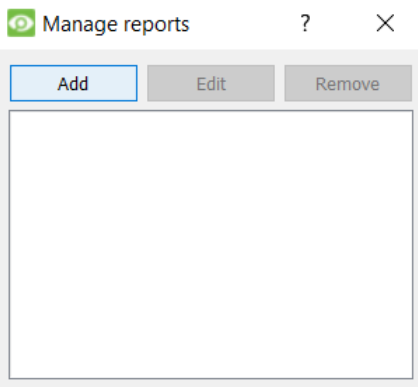


All created reports will be listed here.

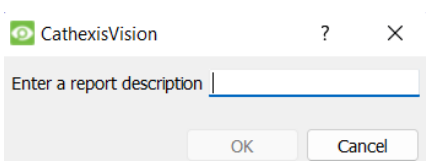
2. Click **Add** to create a report.

3. Then **edit** to define the reporting schedule. See below for more detail.

### 6.2.2.1 New Scheduled Report

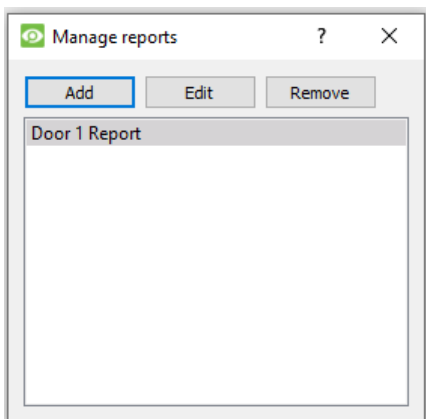


1. In the Manage reports window, click **Add**.



2. Give the report a description.

3. Click **OK** when done.



The item will appear in a list.

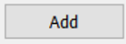
Once the new report is listed with the other reports, select it for editing to define the reporting schedule.

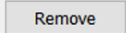
- Schedule** 4. Either right-click the entry and select schedule or **select the entry** and **click the schedule button** at the bottom of the screen

- 5. Edit the **Description** if needed.
- 6. Edit the **View** options.
- 7. Select a **Sorted by** option.
- 8. Select the **Format**.
- 9. Select the **orientation** of the Format.
- 10. Select the **Period** to be reported on.
- 11. Define the **Schedule** for the report.
- 12. Select **Recipients** from the drop-down menu to whom reports will be sent.

### Add/Remove Recipients

Use the icons to edit the drop-down menu.

**Add recipient**  Click **Add** and enter the email address of the recipient. Multiple recipients may be added. All will receive emails.

**Remove recipient**  Select the recipient from the dropdown menu and click **Remove**.

### 6.2.3 Metadata

|                        |  |
|------------------------|--|
| <b>Time</b>            | 2022-11-08 13:17:36  |
| <b>Log type</b>        | Access   |
| <b>Device address</b>  | I0100010002RU  |
| <b>Device name</b>     | Access_point02(Back door) Registration unit/Reader outside |
| <b>Text</b>            | Access authorised  |
| <b>Person ID</b>       | 3  |
| <b>Personal number</b> | 04   |
| <b>Name</b>            | Cathexis, Vision   |
| <b>Personnel type</b>  | Employee   |
| <b>Card number</b>     | Evert  |
| <b>Card role</b>       | Standard   |
| <b>Data point type</b> | Registration unit  |
| <b>Substat F stat</b>  | Offline  |
| <b>Substat on off</b>  | Local decision   |
| <b>Log Id internal</b> | 51484  |

On the right-hand side of the database, metadata about the event entry is displayed.

## 6.2.4 Viewing an Entry's Associated Recording

If cameras are attached to device objects in the integration setup, and these cameras are set up to record continuously, each integration database entry will have a corresponding recording. See the image below.

The screenshot displays the Cathexis Vision software interface. On the left, a table lists various access events with columns for Device name, Text, Person ID, Personal number, Name, Personal type, and Card number. A camera icon in the 'Links' column indicates a recording is available for that event. The selected event is highlighted in blue. On the right, a video player shows a recording of a person at a door. The video player includes a timeline, playback controls, and a metadata panel on the right side.

| Device name  | Text   | Person ID | Personal number | Name                     | Personal type | Card number |
|--|--|-----------|-----------------|--------------------------|---------------|-------------|
| Panel01_test   | Data in access manager no longer current                 | -         | -               | -                        | -             | -           |
| TEST CH  | Communication Hub is loading                             | -         | -               | -                        | -             | -           |
| Panel01_test   | Access hub/access manager/terminal does not respond      | -         | -               | -                        | -             | -           |
| TEST CH  | Communication hub responds again                         | -         | -               | -                        | -             | -           |
| Panel01_test   | Access hub/access manager/terminal responds again        | -         | -               | -                        | -             | -           |
| Panel01_test   | Access hub/access manager/terminal does not respond      | -         | -               | -                        | -             | -           |
| Panel01_test   | Subterminal communicates with the protocol version: 1.25 | -         | -               | -                        | -             | -           |
| Panel01_test   | Access manager was restarting                            | -         | -               | -                        | -             | -           |
| Access_point01(front_door)                                 | Door forced open   | -         | -               | -                        | -             | -           |
| Panel01_test   | Start of tamper alarm                                    | -         | -               | -                        | -             | -           |
| Access_point01(front_door)                                 | Door open too long                                       | -         | -               | -                        | -             | -           |
| Panel01_test   | Access hub/access manager/terminal responds again        | -         | -               | -                        | -             | -           |
| Access_point02(back_door) Frame contact                    | Interruption of contact                                  | -         | -               | -                        | -             | -           |
| Access_point02(back_door) Frame contact                    | Short circuit of contact                                 | -         | -               | -                        | -             | -           |
| Access_point02(back_door) Frame contact                    | Interruption of contact                                  | -         | -               | -                        | -             | -           |
| Access_point02(back_door) Frame contact                    | Short circuit of contact                                 | -         | -               | -                        | -             | -           |
| Access_point02(back_door) Frame contact                    | Interruption of contact                                  | -         | -               | -                        | -             | -           |
| Access_point02(back_door) Frame contact                    | Short circuit of contact                                 | -         | -               | -                        | -             | -           |
| Access_point02(back_door) Frame contact                    | Interruption of contact                                  | -         | -               | -                        | -             | -           |
| Access_point02(back_door) Frame contact                    | Short circuit of contact                                 | -         | -               | -                        | -             | -           |
| Access_point02(back_door) Frame contact                    | Interruption of contact                                  | -         | -               | -                        | -             | -           |
| Access_point02(back_door) Frame contact                    | Short circuit of contact                                 | -         | -               | -                        | -             | -           |
| Access_point02(back_door) Frame contact                    | Interruption of contact                                  | -         | -               | -                        | -             | -           |
| Access_point02(back_door) Frame contact                    | Short circuit of contact                                 | -         | -               | -                        | -             | -           |
| Access_point02(back_door) Frame contact                    | Interruption of contact                                  | -         | -               | -                        | -             | -           |
| Access_point02(back_door) Frame contact                    | Short circuit of contact                                 | -         | -               | -                        | -             | -           |
| Access_point02(back_door) Frame contact                    | Interruption of contact                                  | -         | -               | -                        | -             | -           |
| Access_point02(back_door) Frame contact                    | Short circuit of contact                                 | -         | -               | -                        | -             | -           |
| Access_point02(back_door) Frame contact                    | Interruption of contact                                  | -         | -               | -                        | -             | -           |
| Access_point02(back_door) Frame contact                    | Short circuit of contact                                 | -         | -               | -                        | -             | -           |
| Access_point02(back_door) Registration unit/reader outside | Access authorized  | 3         |                 | Cathexis,Vision          | Undefined     | Evert       |
| Access_point02(back_door) Frame contact                    | Interruption of contact                                  | -         | -               | -                        | -             | -           |
| Access_point02(back_door) Frame contact                    | Short circuit of contact                                 | -         | -               | -                        | -             | -           |
| Access_point02(back_door) Registration unit/reader outside | Passage completed  | 3         | 04              | Cathexis,Vision Employee | Employee      | Evert       |
| Access_point02(back_door) Frame contact                    | Interruption of contact                                  | -         | -               | -                        | -             | -           |
| Access_point02(back_door) Frame contact                    | Short circuit of contact                                 | -         | -               | -                        | -             | -           |
| Access_point02(back_door) Registration unit/reader outside | Access authorized  | 3         | 04              | Cathexis,Vision Employee | Employee      | Evert       |
| Access_point02(back_door) Registration unit/reader outside | Passage completed  | 3         | 04              | Cathexis,Vision Employee | Employee      | Evert       |



To view an associated recording, simply left-click on a database entry which has the camera icon in the **Links** column.



Then click **play** in the video player.

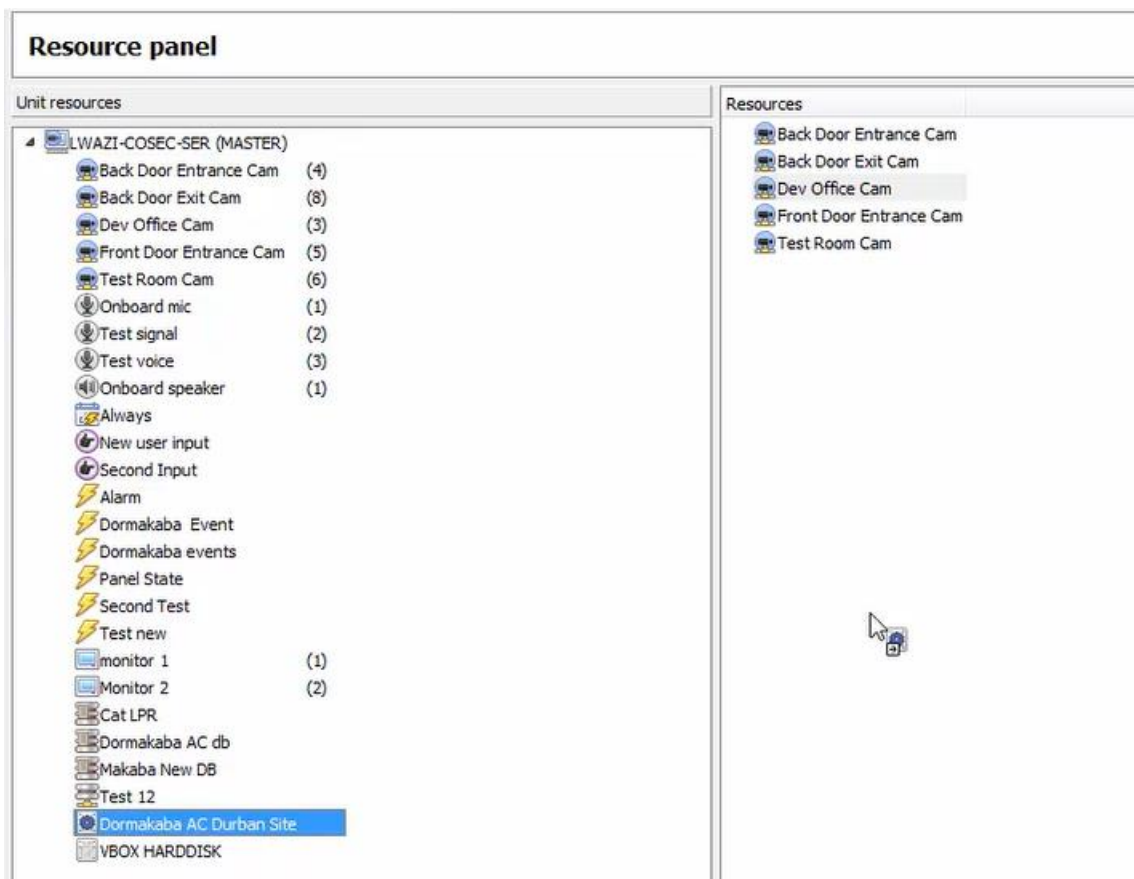
## 7. Maps

It is possible to add a **Dormakaba** device to a site map, which will allow for a number of action options when objects are triggered. These options include the animation of triggered zones and connecting to site cameras when zones are triggered, etc.

**Note:** This section will only deal with the specifics of the **Dormakaba** integration. For more information on using the CathesisVision Map Editor and Map Tab, please consult the dedicated and detailed **Map Editor Operation Manual**.

### 7.1 Add Dormakaba as a Resource

To configure the map, the **Dormakaba** integration must be added as a resource to be added to the map.

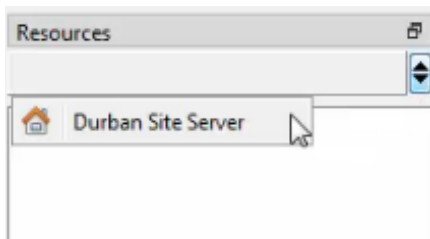


1. Navigate to the **Resource Panel** by following **Site / Open Tab / Setup / Resource Panel**.
2. Drag the Dormakaba device from the **Unit Resources** list into the **Resources** list, on the right.

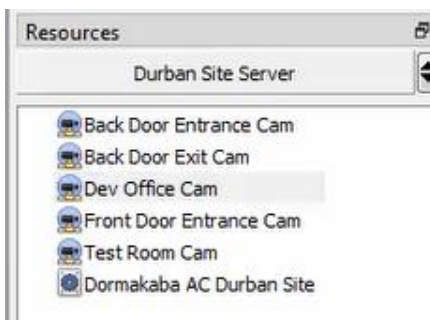
## 7.2 Add the Device in Map Editor

Once the **Dormakaba** device has been added as a **Resource**, it will be available to drag onto the map area from the **Site Resources** list.

### 7.2.1 Connect to Site

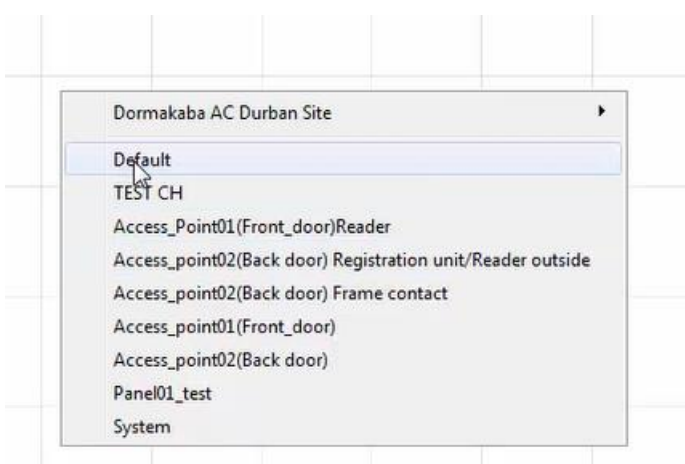


1. At the bottom right-hand of the Map Editor screen, click the drop-down menu to select the site to connect to.



2. Once connected to site, all the resources available will populate the panel below.

### 7.2.2 Adding Device Objects



1. Drag the **Dormakaba** device from the Site Resources list onto the **map area**.

2. All the **Dormakaba** device objects will appear in a list.

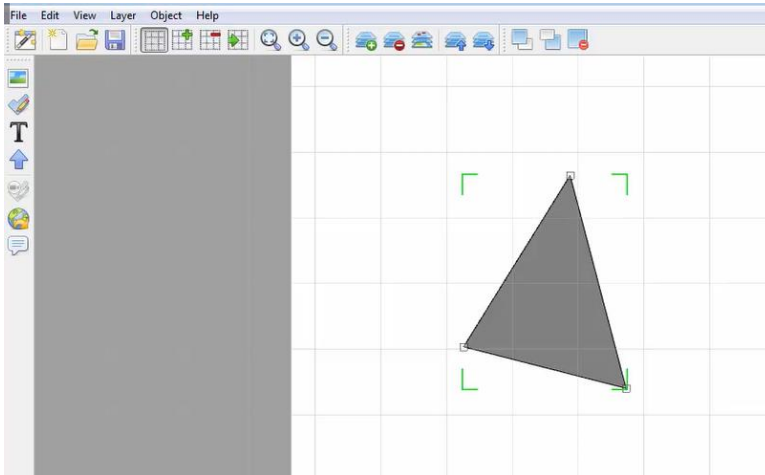
3. Select an object.

**Note:** To add multiple objects, repeatedly drag-and-drop the **Dormakaba** device onto the map area and select the desired objects individually.

### 7.3 Adding a Polygon/Shape

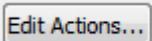


1. Select the draw icon to begin creating a shape.

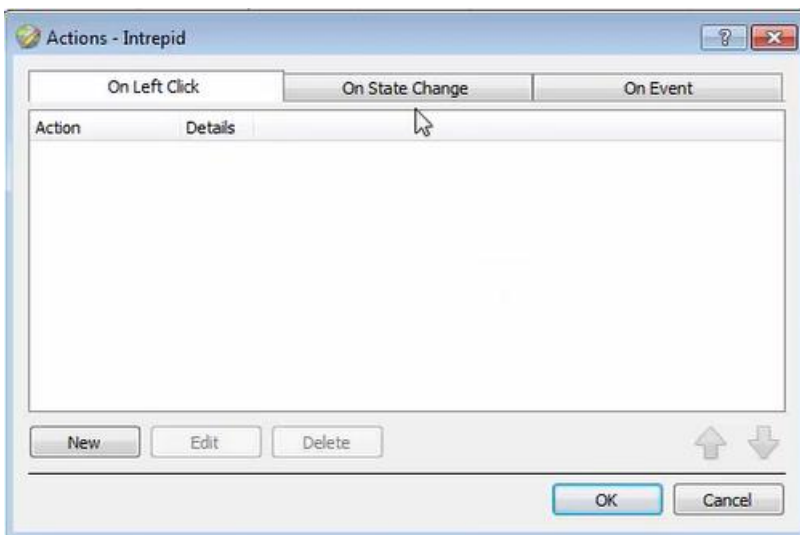


2. Use the mouse to draw the sides of the shape.

### 7.3 Adding Device Actions

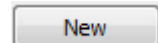


1. To add actions to the device objects, select the object on the map and click Edit Actions.



Actions may be set for **Left-clicks**, **State Changes**, and **Events**.

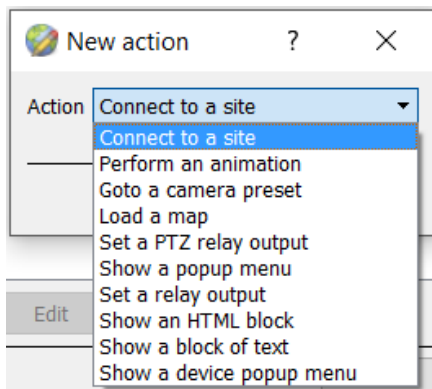
2. To create a new action, select



### 7.3.1 Action Options

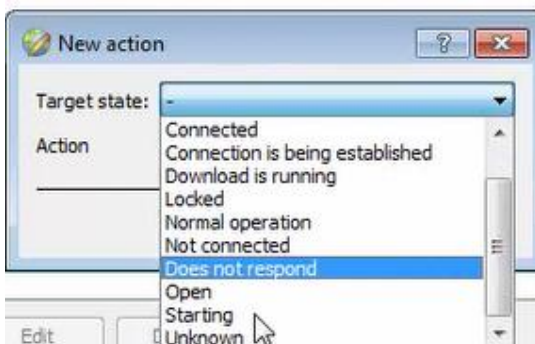
The action triggers will differ according to the object selected, as well whether the action is being set for a Click, State Change, or Event. See below.

#### 7.3.3.1 On Left-Click



Select a map action to be triggered when the device object is left-clicked on the map.

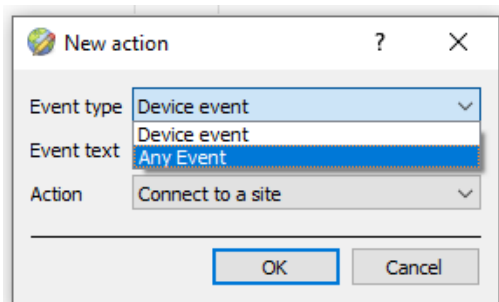
#### 7.3.1.2 On State Change



Select the target state which is to be represented on the map.

Then select an action with which to represent the target state.

#### 7.3.1.3 On Event Tab



Select the event type of the device object which will trigger the map action.

Event text

Enter Event text which will appear on the map when the selected event triggers this map action.

Action

- Connect to a site
- Connect to a site
- Perform an animation
- Goto a camera preset
- Load a map
- Set a PTZ relay output
- Show a popup menu
- Set a relay output
- Show an HTML block
- Show a block of text
- Show a device popup menu

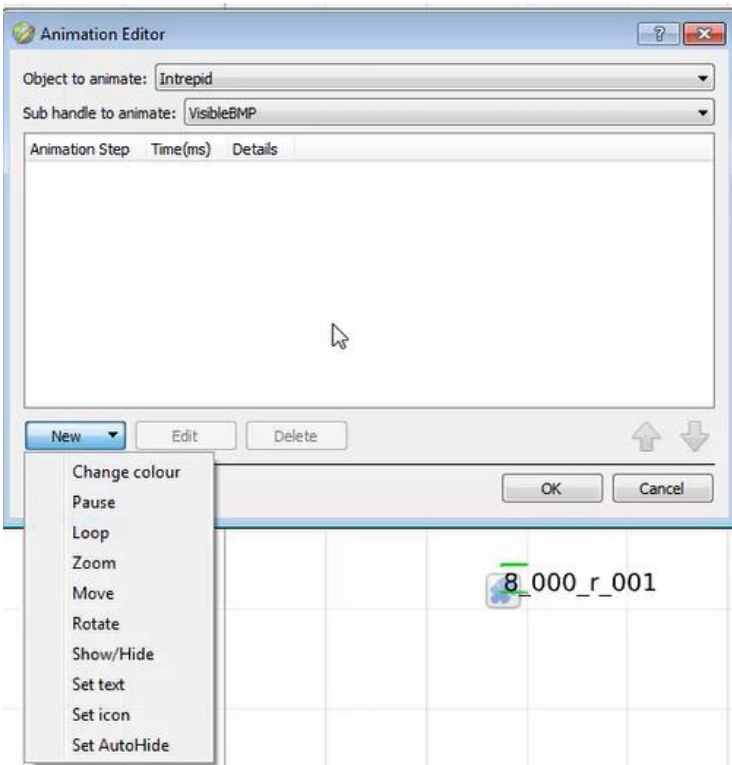
Select the map action which will be triggered by the device object event.

**Note:** Event actions include the option to **Show a device event notification**.

**Note:** Multiple actions may be added to the map objects.

### 7.3.1.4 Animation Editor

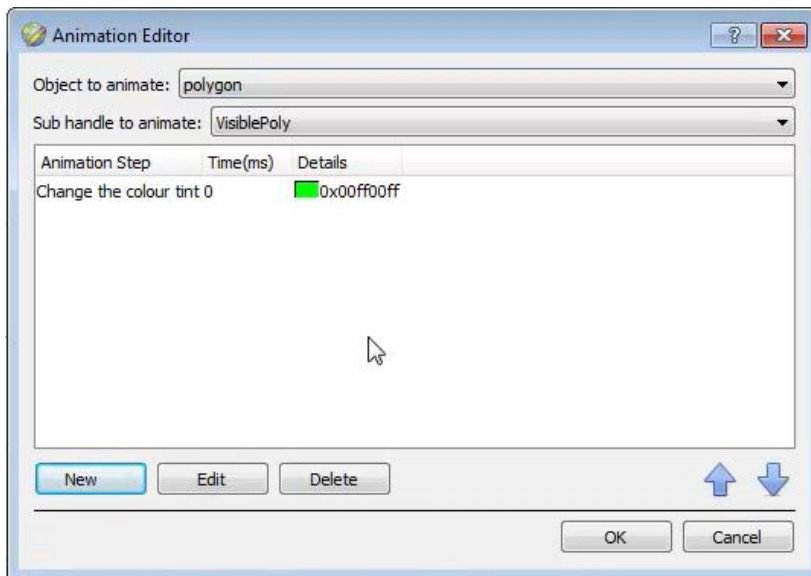
If the user has chosen to represent a click, state change, or event with an animation, the animation editor will open.



Select **New** at the bottom of the window.

Choose a way to animate the polygon, for instance, change colour.

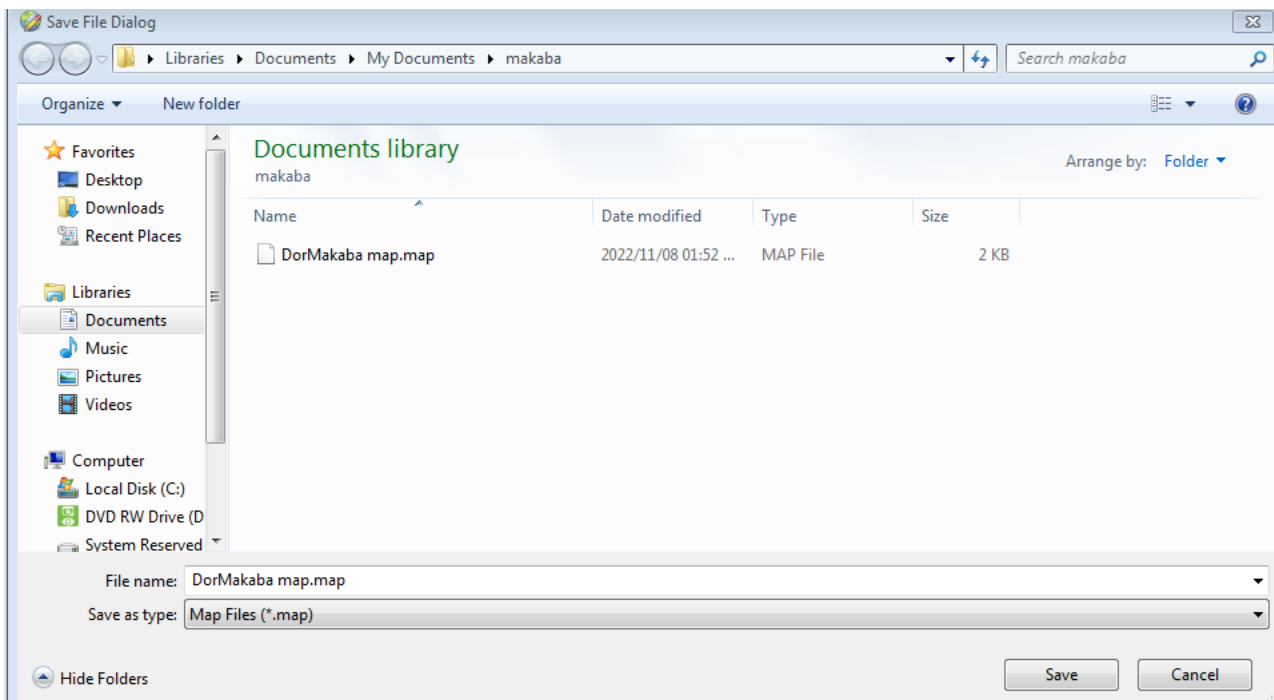




Select the item in the list to edit the details, for instance to choose a colour from the colour chart.

## 7.4 Save Map

Once finished, save the map.



**Note:** The map **must not be saved** in the **Work** folder of the CathesisVision installation directory.

## 7.5 CathexisVision Map Tab

The saved map needs to be uploaded to CathexisVision.



Navigate to the Map tab by following the filepath:

**Site / Open tab / Map**

Once the map is open, all objects added to the map area in the Map Editor will be visible on the map, and all actions set will be available.

## 8. Conclusion

This document was designed to deal specifically with this integration. For further information about the CathesisVision software, consult the main manual (<http://cathesisvideo.com/>).

For support, email [support@cat.co.za](mailto:support@cat.co.za).

### USEFUL LINKS

To view **tutorial videos** on CathesisVision setup, visit <https://cathesisvideo.com/resources/videos>

Find answers to Cathesis **Frequently Asked Questions**: <https://cathesis.crisp.help/en/?1557129162258>